

Industrial Motor Replacement Parts Price Catalog

BALDOR

CA506

Effective Date:
August 7, 2006



BALDOR

Table of Contents

General Information	2
Electrolytic Capacitors	6
Oil Capacitors	7
Paint	7
Electronic Starting Switches	8
Overload Protectors	8
Thermostats	8
Single Phase Stationary Switches	9
Rotating Switch Assemblies	9
Conduit Boxes, Lids, Gaskets	10
Conduit Box Kits	11
Fans Internal-External	12
Fan Covers	13
Cover Assemblies	13
Capacitor Housings	14
Drip Cover Assemblies – TEFC	14
Drip Covers – ODP	14
Retainer Rings	15
Slings	15
Lube-Lok® Seals	15
Weld On Bases	16
Resilient Bases	16
Resilient Rings	16
Brushes	17
Brush Holder Kits	18
Brush Springs	18
Brush Holder Caps	18
Endplates	
TEFC	19
ODP	20
C-Face Kits – AC Motors	21
C-Face Kits – DC Motors	22
Shaft Grounding Kit	22
D-Flange Kits	23
Drip Covers for Field Conversion	23
Fan Cover/Conduit Boxes for Conversion	23
AC Motors	
Steel Band Exploded-View with Callouts	24
Cast Iron Exploded-View with Callouts	25
Grinders	
6-Inch	26
7-Inch	27
8-Inch	28
10-Inch	29
12-Inch	30
14-Inch	31
Polishing Lathes	
340 & 342	32
353	33
359	34
389T-380WCT	35
Eye Shields	
G10-G11	36
GA9	37
Gear Products	38
District Offices	Back Cover

General Information

This catalog shows the most commonly requested replacement parts for three phase, capacitor type, direct current motors, grinders and gear reducers. Many other replacement parts are available. For information on replacement parts not shown, contact your nearest Baldor District Office.

Ordering Information

For any replacement part not shown, please provide a complete description and give the complete motor nameplate data – (especially noting the Baldor specification number).

Use P1 multiplier for all parts.

Baldor's Mission Statement

*To be the best (as determined by our customers)
marketers, designers and manufacturers
of industrial electric motors, drives and generators.*

Baldor's Value Formula

$$V_p = \frac{Q_p \times S_p}{C \times T}$$

Service Policy and Authorized Service Centers

LIMITED WARRANTY

Baldor Electric Company and its employees are proud of our products and are committed to providing our customers and end users with the best designed and manufactured motors, drives and other Baldor products. This Limited Warranty and Service Policy describes Baldor's warranty and warranty procedures.

Comments and Questions: We welcome comments and questions regarding our products. Please contact us at:

Customer Service: Baldor Electric Company
P.O. Box 2400
Fort Smith, Arkansas 72902-2400
Facsimile: 479-648-5791
Website: www.baldor.com

Scope of Warranty: All Baldor standard motors are warranted against defects in Baldor workmanship and materials.

Warranty Period: Most Baldor products are warranted for 18 months from the date of shipment to Baldor's customer from Baldor's district warehouse or, if applicable, from Baldor's factory. Baldor Standard-E[®] standard efficient motors are warranted for 24 months. Standard-E is limited to three phase, general purpose, 1-200 HP ratings that fall under the Energy Policy Act (EPA). Baldor Super-E[®] premium efficient motors are warranted for 36 months. Baldor IEEE841 motors are warranted for 60 months. Baldor commercial motors are warranted for 18 months (see separate warranty statement). Baldor control products are warranted for 24 months. All warranty claims must be submitted to a Baldor Service Center prior to the expiration of the warranty period.

Warranty Service Center Locations: Warranty service is available for all Baldor products from Baldor's Customer Service Center in Fort Smith, Arkansas, and from Baldor Authorized Service Centers. A list of Baldor's Authorized Service Centers is available in catalog #505 on CD, Baldor website: www.baldor.com and from any Baldor District Office or by contacting us at the above location.

Procedure to Receive Warranty Service: Customers should take or ship prepaid the Baldor product requiring warranty service to a Baldor Authorized Service Center. Please include an explanation of the defect or problem, a description of the way in which the Baldor product is used, and your name, address and telephone number.

Repair by Other than a Baldor-Authorized Service Center: Customers who are unable to take or ship the Baldor product to a Baldor Authorized Service Center, or who desire a repair to be made by other than a Baldor Authorized Service Center, should contact the local Baldor District Office. A repair by anyone other than a Baldor Authorized Service Center must be approved in advance by Baldor.

Repairs or Replacement Within the Scope of the Warranty: If a Baldor product is defective due to Baldor workmanship or materials and the defect occurs during the warranty period, then Baldor will either repair the product or replace it with a new one, whichever Baldor believes to be appropriate under the circumstances. Baldor is not responsible for removal and shipping of the Baldor product to the service center, the reinstallation of the Baldor product upon its return to the customer, or any incidental or consequential damages resulting from the defect, removal, reinstallation, shipment or otherwise.

Repairs Outside the Scope of the Warranty: Problems with Baldor products can be due to improper maintenance, faulty installation, non-Baldor additions or modifications, or other problems not due to defects in Baldor workmanship or materials. If the Baldor Authorized Service Center determines that the problem with a Baldor product is not due to defects in Baldor workmanship or materials, then the customer will be responsible for the cost of any necessary repairs. Customers not satisfied with a determination that a problem is outside of warranty coverage should contact the Baldor District Office for further consideration.

Intended Use: Baldor products are designed for industrial, commercial and agricultural use rather than household, family or personal use.

Product Specifications: All product specifications, applications and other information provided in Baldor's catalog and publications are subject to correction and change without notice and should be confirmed with the Baldor District Office prior to ordering.

Extended Warranties: Extended warranties are available for certain Baldor products. These warranties are described in Baldor's catalog and other sales literature. Extended warranties are subject to the terms and procedures of this Limited Warranty and Service Policy as modified by the additional terms of the extended warranty.

No Other Warranties and Liability Limitation: This Limited Warranty and Service Policy represents Baldor's sole and exclusive warranty obligation with respect to Baldor products. Baldor's liability to a customer or any other person shall not exceed the Baldor's sales price of the applicable Baldor product. **BALDOR DISCLAIMS ALL OTHER EXPRESSED AND IMPLIED WARRANTIES INCLUDING THE IMPLIED WARRANTIES OF FITNESS FOR A PARTICULAR PURPOSE AND MERCHANTABILITY.**

Trademark Notices

BALDOR[®], BALDOR MOTORS AND DRIVES[®], BALDOR SmartMotor[®], BALDOR STANDARD-E[®], BALDOR SUPER-E[®], BIG RED[®], DIRTY DUTY[®], INVERTER DRIVE[®], ISR[®], INVERTER SPIKE RESISTANT[®], MOD EXPRESS[®], POW'R GARD[®], VALUE FORMULA[®], and VECTOR DRIVE[®], and associated designs are registered trademarks of Baldor Electric Company. MATCHED PERFORMANCE[™], WASHDOWN DUTY[™], H2[™] and associated designs are trademarks of Baldor Electric Company.

Baldor has made every effort to make this catalog complete and accurate as of the time of printing. All pricing is subject to change or correction. Since products are continuously being improved, all data is subject to change or correction. The data presented here is for general information to provide an overview of Baldor's capabilities. For specific applications, installation and operating instructions, certified dimensions, capabilities and performance data, and pricing and availability, contact your Baldor District Sales Office.

© Baldor Electric Company.



Centres De Service Autorizes Au Canada GARANTIE LIMITEE

Baldor Electric Company et ses employés sont fiers de leurs produits et s'engagent à fournir à leurs clients et utilisateurs des moteurs, entraînements et autres produits, répondant aux critères les plus hauts en matière de conception et de fabrication. Ce document donne des informations sur les conditions de la garantie limitée et sur la politique du service ainsi que les procédures s'y rattachant.

Commentaires et demandes: Les commentaires et demandes à propos de nos produits sont les bienvenus: Veuillez nous contacter au:

Service Clientèle
Baldor Electric Company
P.O. Box 2400
Fort Smith, Arkansas 72902-2400 USA
Telephone: 479-646-4711
Facsimile: 479-648-5792

Etendue de la garantie: Tous les moteurs Baldor du programme standard sont garantis contre tous les défauts de matière, matériel ou main d'oeuvre dépendant de Baldor.

Période de garantie: La plupart des produits Baldor est garantie pendant une période de 18 mois à partir de la date d'expédition au client depuis un entrepôt Baldor régional ou, le cas échéant, depuis l'usine Baldor. Les moteurs à rendement standard Baldor Standard-E™ sont garantis pendant une période de 24 mois. Les moteurs Standard-E sont limités à une puissance triphasée d'usage général de 1 à 200 h.p. en vertu de la Loi américaine sur la politique énergétique (EPAct). Les moteurs à haut rendement Baldor Super-E™ sont garantis pendant une période de 36 mois. Les moteurs Baldor conformes à la norme IEEE841 sont garantis pendant une période de 60 mois. Les moteurs commerciaux Baldor sont garantis pendant 18 mois (voir l'énoncé de garantie séparé). Les systèmes de commande Baldor sont garantis pendant une période de 24 mois. Toutes les réclamations formulées au titre de la garantie doivent être adressées à un Centre de Service Baldor avant l'expiration de la période de garantie.

Centres de Service de garantie: Le service pour tous les produits Baldor dans le cadre de la garantie est disponible au Service Clientèle de Baldor à Fort Smith, Arkansas, et dans les Centres de Service Baldor agréés. Une liste des Centre de Service Baldor agréés est disponible sous la référence de publication #505 dans tout Bureau Régional Baldor ou à l'adresse mentionnée ci-dessus.

Procédure à suivre pour obtenir un service sous garantie: Le client doit apporter ou expédier à ses frais à un Centre de Service Baldor agréé, le produit Baldor nécessitant un service sous garantie. Le client devra inclure la description du défaut ou du problème rencontré, la description de la manière dont le produit Baldor est utilisé ainsi que son nom, adresse et numéro de téléphone.

Réparation par un autre organisme qu'un Centre de Service Baldor agréé: Le client qui ne peut pas porter ou expédier le produit Baldor à un Centre de Service Baldor agréé ou le client qui désire que les travaux soient effectués par un autre organisme qu'un Centre de Service Baldor agréé, doit prendre contact avec le Bureau Régional Baldor. Une intervention effectuée par un autre organisme qu'un Centre de Service Baldor agréé doit être au préalable approuvée par Baldor.

Réparations ou échanges dans le cadre de la garantie: Si il est reconnu qu'un produit Baldor présente pendant la période de garantie un défaut de matière, matériel ou main d'oeuvre dépendant de Baldor, ce produit sera soit réparé, soit échangé contre un produit neuf, la décision appropriée selon les circonstances appartenant à Baldor. Baldor n'est pas responsable du démontage et de l'expédition du produit vers un Centre de Service, de la réinstallation du produit à son retour chez le client, ou de tout dégât accidentel ou consécutif lié au défaut, dépose, réinstallation, transport ou autre.

Réparations en dehors du cadre de la garantie: Les problèmes rencontrés avec les produits Baldor peuvent être la conséquence d'un mauvais entretien, d'une installation incorrecte, d'adjonction d'accessoires hors du programme Baldor, de modifications, ou être des problèmes indépendants de défauts de matière, matériel ou main d'oeuvre dépendant de Baldor. Si le Centre de Service Baldor agréé détermine que le problème n'est pas lié à des défauts de matière, matériel ou main d'oeuvre dépendant de Baldor, toute réparation s'avérant nécessaire sera à la charge du client. Le client qui ne sera pas satisfait avec le classement du problème en dehors du cadre de la garantie, devra prendre contact avec le Bureau Régional Baldor pour une reconsidération de la situation.

Utilisation envisagée: Les produits Baldor sont conçus pour une utilisation industrielle, commerciale ou agricole, plutôt que ménagère, familiale ou personnelle.

Spécifications des produits: Toutes les spécifications des produits, directives d'applications ou autres informations fournies dans les catalogues et publications Baldor, sont sujettes à des corrections ou modifications sans préavis et doivent être confirmées par un Bureau Régional Baldor avant commande.

Garantie prolongée: Des garanties prolongées sont disponibles pour certains produits Baldor. Ces garanties sont décrites dans les catalogues ou autres publications commerciales Baldor. Les garanties prolongées sont soumises aux mêmes conditions et procédures que la garantie limitée et politique de service, avec en plus les amendements propres à la garantie prolongée.

Autres garanties et limites de responsabilité: Cette garantie limitée et cette politique de service sont les seules et uniques obligations de garantie que Baldor est tenu de respecter pour ses produits. La responsabilité de Baldor envers un client ou toute autre personne ne peut excéder le prix de vente par Baldor du produit Baldor impliqué. BALDOR REJETTE TOUTE AUTRE FORME DE GARANTIE EXPLICITE OU IMPLICITE, Y COMPRIS LA GARANTIE IMPLICITE D'APTITUDE A UNE INTENTION OU UNE COMMERCIALISATION PARTICULIERE.

Remarques sur les marques

BALDOR®, BALDOR MOTORS AND DRIVES®, BALDOR SmartMotor®, BALDOR STANDARD-E®, BALDOR SUPER-E®, BIG RED®, DIRTY DUTY®, INVERTER DRIVE®, ISR®, INVERTER SPIKE RESISTANT®, MOD EXPRESS®, POW'R GARD®, VALUE FORMULA®, et VECTOR DRIVE®, ainsi que les dessins associés sont des marques déposées par Baldor Electric Company. MATCHED PERFORMANCE™, WASH DOWN DUTY™, H2™ et ainsi que les dessins associés sont des marques de fabrique de Baldor Electric Company.

Baldor a fait tous les efforts nécessaires pour disposer d'un catalogue complet et précis au moment de son impression. Tous les prix sont sujets à corrections ou modifications. En raison de l'amélioration constante des produits, toutes les données sont sujettes à corrections ou modifications. Les données de ce catalogue apportent une information générale sur les caractéristiques des produits Baldor. Pour les applications spécifiques, les directives d'installations et d'utilisation, les dimensions exactes, les données caractéristiques et le rendement, veuillez prendre contact avec un des Bureaux Régionaux Baldor.

© Baldor Electric Company.

Política de Servicio y Centros de Servicio Autorizados

GARANTIA LIMITADA

Baldor Electric Company y sus empleados están orgullosos de sus productos y están comprometidos a suministrar a todos sus clientes y usuarios finales, motores, controles, generadores y otros productos Baldor con excelente diseño y con la más alta calidad de fabricación. Esta Garantía Limitada y Política de Servicio describe nuestra garantía y los procedimientos en caso de un reclamo por garantía.

Comentarios y consultas: Sus preguntas y consultas relacionadas con nuestros productos son bienvenidas. Puede ponerse en contacto con nosotros en la siguiente dirección y teléfono:

Servicio a Clientes
Baldor Electric Company
P.O. Box 2400
Fort Smith, Arkansas 72902-2400 USA
Teléfono: ++479 646-4711
Fax: ++479 648-5792

Alcance de la Garantía: Todos los motores estándar de Baldor están garantizados contra defectos de materiales y fabricación.

Período de Garantía: La mayoría de los motores Baldor están garantizados por 18 meses contados a partir de la fecha de despacho al cliente desde la fábrica o alguno de los almacenes Baldor. Los motores de eficiencia estándar Baldor Standard-E® están garantizados por 24 meses. Los motores Standard-E están limitados a motores trifásicos, de propósito general, de 1 a 200 HP que estén cubiertos bajo las normas del EPAct (Energy Policy Act de Estados Unidos). Los motores de alta eficiencia Baldor Super-E® están garantizados por 36 meses. Los motores Baldor IEE841 están garantizados por 60 meses. Los motores comerciales están garantizados por 18 meses (ver declaración de garantía separada). Los productos de control de Baldor están garantizados por 24 meses. Todas las reclamaciones por garantía deben ser presentadas a un Centro de Servicio Baldor autorizado antes del vencimiento del período de garantía.

Ubicación de los Centros de Servicio de Garantía: Se ofrece servicio de garantía para todos los productos Baldor en nuestro Centro de Servicio al Cliente en Fort Smith, Arkansas, en Estados Unidos, y en todos nuestros Centros de Servicio y Distribuidores Autorizados en América Latina. Los catálogos 505E y 501, el CD de Baldor, o nuestra página Web www.baldor.com le ofrecen una lista de estos centros autorizados, o puede contactarnos en la dirección indicada más arriba para mayor información.

Procedimiento para obtener servicio de garantía: El cliente deberá llevar el producto Baldor que requiera servicio de garantía o deberá enviarlo con gastos pre-pagados a un Centro de Servicio Autorizado Baldor. Por favor, incluya una explicación del defecto o problema y una descripción de cómo se está usando el producto Baldor, además de su nombre, dirección y número de teléfono.

Reparaciones hechas por terceros y no por un Centro de Servicio Autorizado: Los clientes que no puedan llevar o enviar el producto Baldor a un Centro de Servicio Autorizado Baldor, o que deseen que la reparación sea hecha por un tercero que no sea un Centro de Servicio Autorizado, deberán ponerse en contacto con la Oficina Regional de Baldor en Latinoamérica, o con la Oficina de Distrito local dentro de Estados Unidos. Toda reparación por un tercero que no sea un Centro de Servicio Autorizado deberá ser aprobada por Baldor Electric por anticipado.

Reparación o recambio dentro del alcance de la garantía: Si un producto Baldor falla debido a los materiales o defectos de fabricación, y la falla ocurre durante el período de garantía, Baldor tendrá la opción de repararlo o cambiarlo por uno nuevo, dependiendo de lo que Baldor considere apropiado según las circunstancias. Baldor no se hace responsable por el desmontaje del producto Baldor, ni por su envío al Centro de Servicio Autorizado, ni por la reinstalación del mismo después de su regreso al cliente, ni por ningún daño o gasto incidental o consecuencial, directo o indirecto que resulte por tal falla, o su resultante retiro, transporte o reinstalación.

Reparaciones fuera del alcance de la garantía: Los problemas que puedan presentar los productos Baldor pueden ser causados por un mantenimiento inadecuado, por una instalación defectuosa, por adiciones o modificaciones que no sean Baldor, o por otros problemas que no sean realmente defectos de materiales o de fabricación. Si un Centro de Servicio Autorizado determina que el problema con el producto Baldor no se debe a fallas de materiales o fabricación, el cliente será responsable por el costo de reparación. Los clientes que no estén satisfechos con la determinación del Centro de Servicio Autorizado pueden contactar la Oficina Regional en Latinoamérica o la Oficina de Distrito local dentro de los Estados Unidos.

Uso proyectado: Los productos Baldor están diseñados para uso industrial, comercial y agrícola y no para uso doméstico, familiar o personal.

Especificaciones de productos: Todas las especificaciones de productos, aplicaciones y otra información proporcionada en catálogos y publicaciones de Baldor están sujetas a correcciones y cambios sin previo aviso y deben ser confirmadas directamente con Baldor antes de colocar un pedido.

Garantías extendidas: Ciertos productos tienen una garantía extendida. Estas garantías están descritas en el catálogo de Baldor y otra literatura de ventas. Las garantías extendidas están sujetas a los términos y procedimientos de esta Garantía Limitada y Política de Servicio según hayan sido modificadas por los términos adicionales de tales garantías extendidas.

Inexistencia de otras garantías y Límite de Responsabilidad: Esta Garantía Limitada y Política de Servicio representa la única y exclusiva obligación por garantía de Baldor con respecto a los productos Baldor. La responsabilidad de Baldor hacia un cliente o cualquier otra persona no excederá el precio de venta de Baldor para el producto Baldor en cuestión. BALDOR RECHAZA CUALQUIER OTRA GARANTÍA EXPRESA O IMPLÍCITA, INCLUYENDO LAS GARANTÍAS IMPLÍCITAS O DE APTITUD PARA UNA COMERCIALIZACIÓN O UN USO DETERMINADO.

Avisos sobre marcas registradas

BALDOR®, BALDOR MOTORS AND DRIVES®, BALDOR SmartMotor®, BALDOR STANDARD-E®, BALDOR SUPER-E®, BIG-RED®, DIRTY DUTY®, INVERTER DRIVE®, ISR®, INVERTER SPIKE RESISTANT®, MOD EXPRESS®, POW'R GARD®, VALUE FORMULA®, y VECTOR DRIVE® y sus diseños asociados, son marcas registradas de Baldor Electric Company. MATCHED PERFORMANCE™, WASHDOWN DUTY™, H2™ y sus diseños asociados, son marcas comerciales de Baldor Electric Company.

Baldor ha dedicado un gran esfuerzo para que este catálogo sea completo y correcto al momento de su impresión. Como los productos se están mejorando continuamente, toda la información está sujeta a cambios o correcciones. Los datos que se presentan en este documento son para información general y ofrecen un panorama de las capacidades de Baldor. Para instrucciones en aplicaciones específicas, instalación y operación, o para dimensiones certificadas, capacidades y datos de rendimiento, precios y disponibilidad, contacte a su distribuidor local u oficina Regional en Latinoamérica o su oficina de Distrito en Estados Unidos.

Electrolytic Capacitors (Start)

The same top quality original specified for use in our motors.
For replacements and upgrades. Comes with original .25
quick-disconnect terminals.



Voltage AC	MFD Value	Part Number	List Price	Shipping Weight Lbs.
110/125	130-157	EC1130A02SP	\$13.00	1.00
	130-156	EC1130A08SP	13.00	1.00
	189-227	EC1189A02SP	22.00	1.00
	216-259	EC1216A02SP	13.00	1.00
	270-324	EC1270A02SP	14.00	1.00
	340-408	EC1340A03SP	17.00	1.00
	400-480	EC1400A03SP	22.00	1.00
	430-516	EC1430A03SP	26.00	1.00
	460-552	EC1460A05SP	23.00	1.00
	540-648	EC1540A06SP	26.00	1.00
	645-774	EC1645A06SP	29.00	1.00
	815-978	EC1815A06SP	32.00	1.00
	850-1020	EC1850A06SP	34.00	1.00
	645-774	EC4645A03SP	24.00	1.00
220/250	145-174	EC1145C06SP	33.00	1.00
	161-193	EC1161C06SP	35.00	1.00
	216-259	EC1216C06SP	40.00	1.00
	189-227	EC1189C06SP	38.00	1.00

Oil Capacitors (Run)

For replacements and upgrades.



Voltage AC	MFD Value	Part Number	List Price	Shipping Weight Lbs.
370	10	OC3010F12SP	\$26.00	1.00
370	12	OC3012F12SP	24.00	1.00
370	15	OC3015F12SP	24.00	1.00
370	16	OC3016F12SP	24.00	1.00
370	20	OC3020F12SP	23.00	1.00
370	30	OC3030F11SP	28.00	1.00
370	35	OC3035F09SP	28.00	1.00
370	40	OC3040F09SP	32.00	1.00
370	50	OC3050F09SP	36.00	1.00
370	60	OC3060F10SP	36.00	1.00

Paint

Original factory colors for touch up after repairs or upgrades.

In convenient 16 oz. spray cans



Description	Part Number	List Price	Shipping Weight Lbs.
Charcoal Gray	MG1000G30SP	\$15.00	1.00
Battleship Gray	MG1000G23SP	15.00	1.00
Red Lacquer	MG1000R22SP	15.00	1.00
Tan (Farm Duty)	MG1000C12SP	15.00	1.00
White	MG1000W05SP	15.00	1.00
Gold	MG1000Y10SP	15.00	1.00

Additional \$20.00 UPSG, \$30.00 UPSR Hazard Fee applies to all paint orders.

Electronic Switches

Hp	Part Number	Description	List Price	Shipping Weight Lbs.
1/4 - 1/2	ES5500SP	16 Amp L	\$ 47.00	1.00
1/4 - 3/4	ES5501SP	25 Amp L	70.00	1.00
1/2 - 1	ES5502SP	40 Amp L	61.00	1.00
1/2 - 1-1/2	ES5609SP	40 Amp LC	128.00	1.00
2	ES5602SP	40 Amp LC	105.00	1.00
2 - 3	ES5700SP	50 Amp LC	166.00	1.00
3	ES5601SP	50 Amp L/LC	109.00	1.00
3	ES5605SP	50 Amp LC	105.00	1.00

NOTES: L = Capacitor start
LC = Capacitor start/Capacitor run



Overload Protectors Klixon Type – Manual and Automatic Styles

Please give complete Klixon number or motor specification number

Part Number	List Price	Part Number	List Price
TPCRT16CBSP	\$27.00	TPLEC927SP	\$80.00
TPCRJ38CBSP	27.00	TPMRJ26RBSP	24.00
TPCRJ50EBSP	55.00	TPCRJ31CASP	27.00
TPCRJ33CBSP	32.00	TPBRJ25DBSP	61.00
TPCRJ50CBSP	27.00	TPMRG57BASP	23.00
TPCRJ31CBSP	32.00	TPBRH00DBSP	56.00
TPCRH00CBSP	24.00	TPMRD4747SP	65.00
TPMRJ38RBSP	24.00	TPMRD4749SP	26.00
TPMSG30BASP	24.00	TPBEC1959SP	61.00
TPMRJ24ABSP	24.00		



Thermal Kits*	List Price
TPLED1027SP	\$88.00
TPLED1024SP	99.00
TPLED1011SP	92.00
TPBRD3929SP	63.00
TPCRD4757SP	35.00
TPCRD4755SP	35.00

NOTES: *Thermal Kits include connection wire welded to the terminal
Shipping weights less than 1.00 Lb. each

Thermostats

Part Number	Description	List Price	Shipping Weight Lbs.
TP1500A01SP	9700K-06-139	\$17.00	1.00
TP1501A13SP	70M-130° C	22.00	1.00
TP1501A15SP	70M-155° C	17.00	1.00
TP1501A18SP	70M-180° C	23.00	1.00
TP1501B13SP	70MR-130° C	28.00	1.00
TP1501B15SP	70MR-155° C	23.00	1.00
TP1515A01SP	Thermik	17.00	1.00

NOTES: MR = Open
M = Normally Closed



Single Phase Stationary Switches



NEMA Frame	Part Number	Description	List Price	Shipping Weight Lbs.
48, 56	SP5076SP	Terminal Panel	\$27.00	1.00
42,48	SP5073SP	Terminal Panel	22.00	1.00
48, 56,143-145	SP5001SP	Instant Reversing	56.00	1.00
48, 56	SP5068SP	Dual Silver Contact	27.00	1.00
143-145	SP5000SP	Instant Reversing	48.00	1.00
182-184	SP5069SP	Dbl Arm Terminal Panel	35.00	1.00
143-145	SP5051SP	Single Speed	22.00	1.00
143-145	SP5066SP	Terminal Panel	28.00	1.00
48, 56,143-145	SP5056SP	Single Speed	17.00	1.00
213-215	SP5067SP	Torq.Stationary Sw.	26.00	1.00
182-184	SP5061SP	Dual Contact (L)	26.00	1.00
182-184, 213-215	SP5064SP	Dual Contact (LC)	26.00	1.00
182-184, 213-215	SP5007SP	Single Speed	21.00	1.00

Rotating Assembly

Replace worn parts with exact fit factory replacements.



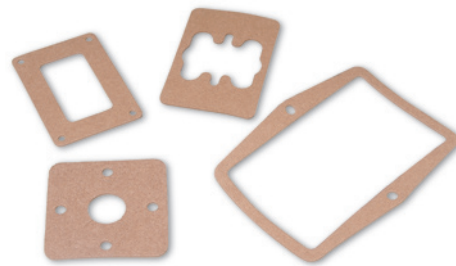
NEMA Frame	Part Number 1140 R.P.M.	List Price	Shipping Weight Lbs.	Part Number 1725 R.P.M.	List Price	Shipping Weight Lbs.	Part Number 3450 R.P.M.	List Price	Shipping Weight Lbs.
48-56	34RS6060SP	\$32.00	1.00	34RS4060SP	\$29.00	1.00	34RS2060SP	\$27.00	1.00
56-145T	35RS6060SP	33.00	1.00	35RS4060SP	32.00	1.00	35RS2060SP	28.00	1.00
182-4T	36RS6060SP	35.00	1.00	36RS4060SP	33.00	1.00	36RS2060SP	29.00	1.00
213-5T	37RS6060SP	36.00	1.00	37RS4060SP	35.00	1.00	37RS2060SP	32.00	1.00

Conduit Boxes and Lids (Non-Explosion-Proof)



NEMA Frame	Conduit Box	List Price	Shipping Weight Lbs.	Conduit Box Lid	List Price	Shipping Weight Lbs.
42	33CB3000SP	\$14.00	1.00	34CB4500SP	\$5.00	1.00
48	34CB3000SP	13.00	1.00	34CB4500SP	5.00	1.00
56,143-5T	35CB3000SP	14.00	1.00	36CB4500SP	6.00	1.00
182-4T	36CB3000SP	15.00	1.00	36CB4500SP	6.00	1.00
182-4T	36CB3004	18.00	1.00	37CB4500SP	6.00	1.00
182-4T	36CB3005A03W	28.00	1.00	37CB4500WSP	9.00	1.00
213-5T	37CB3004	19.00	2.00	37CB4506	6.00	1.00
213-5T	37CB3006	13.00	3.00	37CB4506	6.00	1.00
184,215,254-6	09CB3000SP	28.00	2.00	09CB3500SP	17.00	2.00
184,215,254-6	09CB3002SP	20.00	2.50	09CB3501SP	17.00	1.00
284-6,324-6	10CB3000SP	33.00	1.50	10CB3500SP	29.00	2.50

Conduit Box Gaskets (Non-Explosion-Proof)



NEMA Frame	Lid Gasket	List Price	Shipping Weight Lbs.	Box Gasket	List Price	Shipping Weight Lbs.
42	34GS1001SP	\$2.00	1.00	33GS1000SP	\$3.00	1.00
48	34GS1001SP	2.00	1.00	34GS1000SP	3.00	1.00
56-145	36GS3008SP	3.00	1.00	35GS1022A03SP	3.00	1.00
56, 143-5T	36GS1001SP	2.00	1.00	36GS1000SP	5.00	1.00
182-4T	36GS1001SP	2.00	1.00	36GS1000SP	5.00	1.00
182-4T	37GS1001SP	3.00	1.00	36GS1000SP	5.00	1.00
182-4T	37GS3010SP	2.00	1.00	35GS1022A03SP	3.00	1.00
213-5T	37GS1008SP	2.00	1.00	37GS1000SP	3.00	1.00
213-5T	37GS1008SP	2.00	1.00	37GS1000SP	3.00	1.00
184, 215, 254-6	09GS1001SP	3.00	1.00	09GS1000SP	3.00	1.00
184, 215, 254-6	09GS1013SP	2.00	1.00	09GS1000SP	3.00	1.00
284-6,324-6	10GS1000SP	2.00	1.00	12GS1000SP	2.00	1.00

NOTE: See page 17 for Conduit Box Kits

Conduit Box Kits



NEMA Frame	Kit Number	List Price	Shipping Weight Lbs.
42	33CB5000A01SP	\$22.00	1.00
42	33CB5001A01SP	22.00	1.00
48	34CB5001A01SP	21.00	1.00
56,143-5T	35CB5001A01SP	23.00	1.00
182T-4T	36CB5001A01SP	24.00	1.00
182T-4T	36CB5001A06SP	28.00	2.00
182T-4T	36CB5001A07SP	42.00	2.00
213T-5T	37CB5002A06SP	28.00	2.50
213T-5T	37CB5002A07SP	24.00	4.00
184T,215T,254-6	09CB5001A01SP	49.00	3.00
184T,215T,254-6	09CB5001A15SP	39.00	3.00
254-6T,284-6,324-6	10CB5001A01SP	66.00	5.50
254-6T,284-6,324-6	10CB5002A01SP	80.00	6.00

Fans – Internal

Repair damaged part with original factory replacement for a perfect fit.



NEMA Frame	Enclosure	Part Number	Bore (Inches)	List Price	Shipping Weight Lbs.
48	Open	34FN5003A03SP	0.925	\$23.00	1.00
56	Totally Enclosed	35FN4000A02SP	1.175	24.00	1.00
182-4	Totally Enclosed	36FN4000A02SP	1.425	22.00	1.00
182-4	Open	36FN5001A02SP	1.425	27.00	1.00
213-5	Totally Enclosed	37FN4000A02SP	1.612	36.00	1.50
213-5	Open	37FN5000A02SP	1.612	36.00	1.00
213-5	Open	37FN5000A03SP	1.987	36.00	1.00

Fans – External



NEMA Frame	Material	Part Number	Bore (Inches)	List Price	Shipping Weight Lbs.
42	Plastic	33FN3000SP	0.625	\$15.00	1.00
48,56	Plastic	34FN3002A01SP	0.639	13.00	1.00
48,56	Aluminum	34FN4001SP	0.638	24.00	1.00
48-56	Plastic	34FN5002A01SP	0.639	21.00	1.00
48-56	Aluminum	34FN4001A01SP	0.640	21.00	1.00
56	Plastic	35FN3002A01SP	0.639	24.00	1.00
56	Plastic	35FN3002A02SP	0.988	21.00	1.00
56	Plastic	35FN3002A04SP	0.907	21.00	1.00
56	Plastic	35FN3002A05SP	0.639	21.00	1.00
56	Aluminum	35FN4001SP	1.360	24.00	1.00
182-4	Aluminum	06FN2001A01SP	0.985	28.00	1.00
182-4	Plastic	36FN3000A01SP	0.912	22.00	1.00
254-6	Plastic	09FN3001A01SP	1.500	28.00	1.00
254-6	Plastic	09FN3001C01SP	1.500	24.00	1.00
284-6	Plastic	10FN3000SP	1.700	34.00	2.00
324-6	Plastic	12FN3000SP	2.010	68.00	2.50
364-5	Plastic	14FN3000A01SP	2.125	44.00	3.00

Fan Covers

Restores damaged parts to like new condition restoring proper air flow. Use our original factory paints (see page 7) to match your exact color. The standard color is gray.



NEMA Frame	Material	Part Number	List Price	Shipping Weight Lbs.
48	Steel	33FH4000A01SP	\$ 33.00	1.00
48,56	Steel	34FH4002A01SP	22.00	1.00
56,143-5	Steel	35FH4005A32SP	22.00	1.50
56, 143-5	Steel	35FH4005A55	20.00	1.50
182-4	Steel	36FH4009A102SP	13.00	2.00
213-5	Steel	07FH4007SP	37.00	3.00
254-6	Cast Iron	09FH1000A19SP	149.00	18.50
284-6	Cast Iron	10FH1007A01SP	172.00	33.00
324-6	Cast Iron	12FH1002A05SP	233.00	32.00
364-5	Cast Iron	14FH1002A01	305.00	48.00
404-5	Cast Iron	16FH1002A01	515.00	52.00
445-7	Cast Iron	18FH5002A01	659.00	120.00

Capacitor Housings

Original rugged steel and die cast aluminum for replacement and upgrade. Comes painted standard gray.



NEMA Frame	Part Number	Description	Dimensions (Inches)			List Price	Shipping Weight Lbs.
			L	H	W		
48	34CB4800SP	Steel	4-5/8	1-1/2	1-5/16	\$19.00	1.00
56, 143-5, 182-4	35CB4802A01SP	Steel	4	2-5/32	2-1/8	15.00	1.00
56, 143-5, 182-4	35CB4802A02SP	Steel	5	2-5/32	2-1/8	15.00	1.00
56, 143-5	35CB3801SP	Die Cast Aluminum	5-3/8	2-1/4	4-3/4	21.00	1.00
182-4	36CB3800SP	Die Cast Aluminum	6-5/8	2-5/8	6-9/16	33.00	2.50
213-5	37CB3802SP	Die Cast Aluminum	7-5/8	2-3/4	7-1/16	37.00	2.50

Drip Cover Assemblies – TEFC Motors

NEMA Frame	Assembly Number	List Price	Shipping Weight Lbs.
48-56	34FH5001A01SP	\$36.00	2.00
56-145	35FH5000A04SP	41.00	1.50
182-184	36FH5000A01SP	46.00	3.50
213-215	37FH5000A21SP	61.00	3.00

NOTE: Drip Cover Assemblies include fan cover and hardware.



Drip Covers – ODP Motors

NEMA Frame	Number	List Price	Shipping Weight Lbs.
48-56	34FH4000A11SP	\$ 21.00	1.00
56-145	35FH4000A04SP	26.00	1.00
182-184	36FH4012A01SP	22.00	2.50
213-215	37FH4000A05SP	49.00	3.00
284-286	40FH2500A01	71.00	3.50
324-326	42FH2500A01	175.00	3.50



Retainer Rings

Part Number	Bearing Size	List Price	Shipping Weight Lbs.
RB4003A01	203	\$ 2.00	1.00
RB4000A01SP	205	4.00	1.00
RB4014A03	206	4.00	1.00
RB3000A01SP	207	9.00	1.00
RB3001A01SP	309	15.00	1.00
RB3002A01SP	311	17.00	1.00
RB3004A01SP	312	18.00	1.00
RB3006A01	313	19.00	1.00
RB1060A02	314	152.00	1.00
RB1002A03	316	147.00	1.00
RB1058A01	319	209.00	1.00



Slings

Part Number	Size/ID	List Price	Shipping Weight Lbs.
HA1005A05SP	0.659	\$ 2.00	1.00
HA1005A03SP	0.938	3.00	1.00
HA1005A02SP	1.140	3.00	1.00
HA1005A07SP	1.344	3.00	1.00
HW4600B44SP	1.420	5.00	1.00
HA1005A04SP	1.980	4.00	1.00
HA1005A06SP	2.165	7.00	1.00
HA1005A08SP	2.375	4.00	1.00
HA1005A09	2.906	12.00	1.00
HW4600B45	3.190	7.00	1.00



Lube-Lok® Seals

Part Number	Bearing Size	List Price	Shipping Weight Lbs.
RM1002A01SP	307	\$ 4.00	1.00
RM1002A02SP	309	5.00	1.00
RM1002A03SP	310	5.00	1.00
RM1002A04SP	312	6.00	1.00
RM1002A05SP	314	8.00	1.00
RM1002A06	316	14.00	1.00
RM1002A07	318	19.00	1.00



Weld on Bases – Stamped Steel

NEMA Frame	Part Number	List Price	Shipping Weight Lbs.
42	33BA4003SP	\$16.00	1.00
48	34BA4007SP	17.00	1.00
56	34BA4006SP	16.00	1.50
56	35BA4010SP	17.00	1.50
66W	35BA4006SP	20.00	3.00
143-145	35BA4009SP	17.00	2.50
182-184	36BA4004SP	23.00	3.50
213-215	37BA4004SP	29.00	6.50
213	37BA4001SP	33.00	4.00



Resilient Bases

NEMA Frame	Part Number	List Price	Shipping Weight Lbs.
56	34BA4003A01SP	\$15.00	2.50
56	34BA4003B01	17.00	3.00
56	34BA4003C01	16.00	3.00
56	35BA4002A01	18.00	3.00
56	35BA4002B01	18.00	2.00
56	35BA4002C01	19.00	3.00

Resilient Rings

Type	Part Number	List Price	Shipping Weight Lbs.
34	RM1000A03SP	\$7.00	1.00
35	RM1000A02SP	7.00	1.00



Brushes

Replacement Brushes for Direct Current Motors

All Stock Brushes are sold in sets of two.

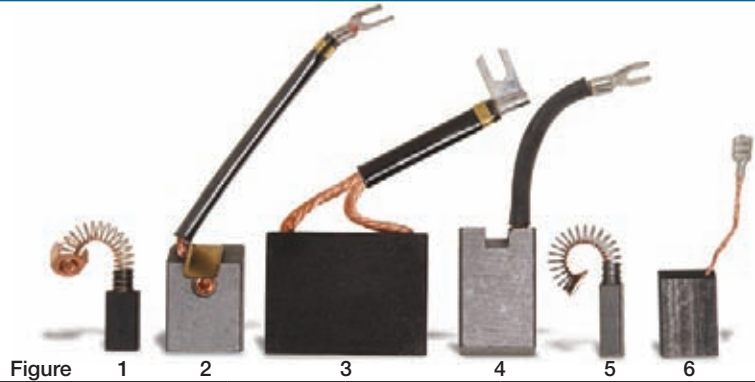


Figure	W Inches	D Inches	L Inches	Part Number	Grade	List Price	Shipping Weight Lbs.
1	3/8	1/4	3/4	BP5000A04SP	E45	\$34.00	1.00
5	5/8	3/16	7/8	BP5000AW14SP	PH	23.00	1.00
5	5/8	3/8	7/8	BP5000BK08SP	SA35	23.00	1.00
5	7/16	1/4	7/8	BP5000H03SP	619	23.00	1.00
1	3/4	3/8	1-1/8	BP5000P07SP	2085	28.00	1.00
5	3/4	7/16	1	BP5000T15SP	3971	35.00	1.00
4	7/8	3/8	1-1/4	BP5001C01SP	673	38.00	1.00
4	7/8	3/8	1-1/4	BP5001H01SP	619	49.00	1.00
4	7/8	3/8	1-1/4	BP5001P01SP	AC	38.00	1.00
2	7/8	3/8	1-1/4	BP5002A01SP	E45	58.00	1.00
2	7/8	3/8	1-1/4	BP5002C01SP	673	63.00	1.00
2	7/8	3/8	1-1/4	BP5002E01SP	E3	55.00	1.00
2	7/8	5/16	1-1/4	BP5003B01SP	698	42.00	1.00
2	7/8	5/16	1-1/4	BP5003C01SP	673	83.00	1.00
2	5/8	5/16	1-1/4	BP5004A01SP	E45	56.00	1.00
2	5/8	5/16	1-1/4	BP5004C01SP	673	65.00	1.00
2	5/8	5/16	1-1/4	BP5004H01SP	619	32.00	1.00
4	3/4	3/16	1	BP5007D01SP	247F	74.00	1.00
6	5/8	1/4	1	BP5011AB01SP	GG	17.00	1.00
6	5/8	7/16	1	BP5011P01SP	AC	38.00	1.00
6	5/8	7/32	1	BP5011T01SP	3971	20.00	1.00
2	1-1/4	5/16	1-1/4	BP5017A01SP	E45	92.00	1.00
1	1/4	1/4	1	BP5021U01SP	AC3	24.00	1.00
5	1/4	1/4	1	BP5021V01SP	GX	33.00	1.00
3	1-7/8	7/16	1-1/2	BP5027A01SP	E45	72.00	1.00
3	1-1/4	7/16	1-1/2	BP5031A01SP	E45	44.00	1.00
5	1/4	5/8	3/8	BP5052BP01SP	AC	13.00	1.00
5	1/8	5/8	3/16	BP5060BD02SP	A120	22.00	1.00
5	1/8	5/8	3/16	BP5060BF02SP	A252	26.00	1.00
5	1/4	5/8	1/4	BP5066P01SP	AC	15.00	1.00
5	1/4	1/4	5/8	BBR1073SP	GG	23.00	1.00
5	1/4	1/4	5/8	BBR1075SP	157E	24.00	1.00
5	1/4	3/8	5/8	BBR1078SP	AC	17.00	1.00
5	1/4	3/8	5/8	BBR1082SP	AC-18	17.00	1.00
5	1/4	1/4	5/8	BBR1083SP	GXM	17.00	1.00
5	5/16	7/16	5/8	BBR1087SP	X045	17.00	1.00
5	1/4	3/8	5/8	BBR1088SP	X045	17.00	1.00
5	5/16	7/16	5/8	BBR1873SP	AC	17.00	1.00
5	1/4	3/8	5/8	BBR1947SP	AC-18	17.00	1.00
5	3/8	1/4	1/2	BP5046AP01SP	E41	17.00	1.00
5	1/4	3/8	1.3	BP5052BN01SP	U1539	19.00	1.00
5	9/16	11/64	1	BP5049AP01SP	E41	15.00	1.00

Brush Holder Kits*

Part Number	List Price	Shipping Weight Lbs.
BP5201A03SP	\$23.00	1.00
BP5201A04SP	27.00	1.00
BP5201A06SP	29.00	1.00
BP5201A07SP	40.00	1.00
BP5201A09SP	33.00	1.00
BP5201A10SP	27.00	1.00
BP5201A11SP	16.00	1.00
BP5201A12SP	38.00	1.00
BP5201A14SP	36.00	1.00
BP5203A01SP	39.00	1.00

NOTE: * Brush kits include brush holders, brush holder caps & lead clips



Brush Springs

Part Number	List Price	Shipping Weight Lbs.
BP2000A01SP	\$7.00	1.00
BP2000A02SP	6.00	1.00
BP2001A01SP	7.00	1.00
BP2002A01SP	7.00	1.00
BP2003A01SP	7.00	1.00
BP2004A01SP	7.00	1.00
BP2007A01SP	7.00	1.00
BP2009A01SP	7.00	1.00



Brush Holder Caps

Part Number	List Price	Shipping Weight Lbs.
BP4508A01SP	\$6.00	1.00
BP4509A01SP	7.00	1.00
BP4511A01SP	7.00	1.00
BP4515SP	2.00	1.00
BP4519SP	7.00	1.00
BP4520	2.00	1.00
BP4530SP	4.00	1.00



Endplates for Horizontal Motors



TEFC – Drive End – Rigid Base Mount Single or Three Phase

NEMA Frame	Bearing Size	Part Number	List Price	Shipping Weight Lbs.
42	203	33EP3100A04	\$ 19.00	1.00
48	203	34EP3102A02SP	23.00	1.00
56, 143-5T	205	35EP3101A01SP	48.00	1.50
182-4T	206	36EP3100A01SP	75.00	2.00
184T	206	• 36EP1100A07	74.00	5.50
213-5T	307	37EP3100A01SP	96.00	4.00
215T	307	• 37EP1101A22	96.00	9.00
254-6T	309	• 09EP1101A11SP	118.00	15.00
284-6T	311	• 10EP1101A01	284.00	25.00
284-6T	311	• 10EP1105A01	234.00	27.00
324-6T	312	• 12EP1106A01	275.00	49.00
364-5T	313	• 14EP1703A13	521.00	56.00
404-5T	316	• 16EP1703A01	620.00	68.00
444-5T	319	• 18EP1104A02	860.00	100.00

NOTE: • Cast Iron frame

TEFC – Opposite Drive End – Rigid Base Mount Single or Three Phase

NEMA Frame	Bearing Size	Part Number	List Price	Shipping Weight Lbs.
42	203	• 33EP1101A04	\$ 41.00	3.00
48	203	34EP3102A01SP	64.00	1.50
56, 143-5T	203	35EP3100A01SP	47.00	1.50
182-4	205	36EP3101A01SP	63.00	2.00
184T	205	• 36EP1101A21	64.00	5.00
213-5T	206	37EP3101A01SP	112.00	3.50
215T	206	• 37EP1100A41	108.00	8.75
254-6T	208	• 09EP1100A14SP	143.00	15.00
284-6T	309	• 10EP1100A01SP	362.00	24.00
284-6T	309	• 10EP1104A01	233.00	21.00
324-6T	311	• 12EP1107A05	281.00	31.00
364-5T	312	• 14EP1102A11	372.00	45.00
404-5T	313	• 16EP1102A15	510.00	78.00
444-5T	316	• 18EP1103A07	803.00	72.00

NOTE: • Cast Iron frame

Endplates for Horizontal Motors



Open – Drive End – Rigid Base Mount Single or Three Phase

NEMA Frame	Bearing Size	Part Number	List Price	Shipping Weight Lbs.
48,56	203	34EP3200A02SP	\$ 35.00	1.50
56,143-5T	205	35EP3200A01	46.00	1.50
182-4T	206	36EP3201A01	62.00	2.00
213-5T	307	37EP3201A01	66.00	4.00
254-6T	309	39EP3201A01	108.00	6.00
284-6T	311	40EP3200B05	126.00	23.00
324-6T	312	42EP3200B01	127.00	30.00
324-6T	312	42EP3200B02	184.00	35.00
364-5T	313	• 14EP1201A01	390.00	50.00
404-5T	316	• 16EP1203A01	436.00	76.00

NOTE: • Cast Iron frame

Open – Opposite Drive End – Rigid Base Mount Single or Three Phase

NEMA Frame	Bearing Size	Part Number	List Price	Shipping Weight Lbs.
48-56	203	34EP3200A01SP	\$ 35.00	1.50
56 & 143-5T	203	35EP3201A01	46.00	1.50
182-4T	205	36EP3200A01SP	62.00	2.00
213-5T	208	37EP3200A01SP	83.00	4.00
254-6T	208	39EP3200A01SP	105.00	6.00
254-6T	208	39EP3200A12SP	138.00	6.00
284-6T	309	40EP3200A02	177.00	16.00
324-6T	311	42EP3200A01	184.00	30.00
364-4T	312	• 14EP1201A01	390.00	55.00
404-5T	315	• 16EP1203A02	436.00	76.00

NOTE: • Cast Iron frame

NEMA AC Motor C-Face Kits for Field Conversion



Kit Catalog Number	NEMA Frame	Bearing	Enclosure	List Price	Shipping Weight Lbs.
34-3900T	48C	6203	TEFC	\$ 36.00	1.00
34-171	56C	6203	TEFC	36.00	2.00
34-3903A	143-5TC	6205	ODP	39.00	2.00
34-3903T	143-5TC	6205	TEFC	39.00	2.00
35-8762	56C,143-5TC	6205	TEFC	42.00	3.00
35-8764	56C,143-5TC	6205	ODP	42.00	3.00
35-1300	56C,143-5TC	6205	TEFC	60.00	6.00
35-1325	182-4TC	6206	TEFC	66.00	11.00
35-1409	182-4TC	6206	ODP	57.00	11.00
36-1037	182-4C	6206	TEFC	66.00	8.00
36-1206A	213-5TC	6207	OPSB	101.00	13.00
36-1206B	213-5TC	6207	ODP	101.00	14.00
36-486	182-4C	6206	ODP	83.00	8.00
36-3301	182-4TC	6206	TEFC	50.00	5.00
36-3403	182-4TC	6206	ODP	49.00	5.00
36-1749	182-4TC	6206	TEFC	66.00	12.00
37-1404	213-5C, TC	6307	ODP	95.00	14.00
37-1304	213-5C, TC	6307	TEFC	102.00	13.00
37-1402	254-6UC, TC	6309	ODP	111.00	18.00
37-1302	254-6UC, TC	6309	TEFC	107.00	18.00
• 09-1309	254-6UC, TC	6309	TEFC	149.00	22.00
• 09-1310	284-6UC, TC	6311	TEFC	195.00	22.00
39-3400	254-6UC, TC	6309	ODP	157.00	19.00
• 39-1403	284-6UC, TC	6311	ODP	195.00	21.00
• 10-1304	324-6UC, TC	6312	TEFC	224.00	32.00
• 10-1305	284-6UC, TC	6311	TEFC	212.00	32.00
• 40-1400	284-6UC, TC	6311	ODP	206.00	30.00
• 40-1401	324-6 UC, TC	6312	ODP	255.00	40.00
12-1105	324-6UC, TC	6312	TEFC	286.00	48.00
• 42-1300	324-6UC, TC	6312	ODP	463.00	36.00
• 42-1400	364-5 UC & TC	6313	ODP	451.00	30.00
• 14-1303	404-5TC	6316	TEFC	617.00	57.00
• 14-1704	364-5UC, TC	6313	TEFC	451.00	57.00
• 14-1401	364-5UC, TC	6313	ODP	451.00	60.00
• 16-1704	404-5UC, TC	6316	TEFC	617.00	76.00
• 16-1400	404-5UC, TC	6316	ODP	617.00	78.00
x • 18-1203	444-7UC, TSC	6313	ODP	676.00	118.00
18-1202	444-7UC, TC	6319	ODP	676.00	128.00
18-1302	444-9UC, TC	6319	TEFC	725.00	182.00
44-1402	404-5 UC & TC	6316	ODP	522.00	40.00
44-1403	404-5 UC & TSC	6313	ODP	522.00	40.00
44-1403A	404 USC, TSC	6312	OPEN	522.00	40.00

NOTES: * Suitable only for field conversion of motors manufactured with external rabbets on the stator housings.

x Contact a District Office with nameplate specification number to determine the correct kit. • Cast Iron frames
NEMA "BA" Dimension will not be standard after conversion on NEMA 143-5T, 182-4T, 213-5T, and 254-6T.

NEMA DC Motor C-Face Kits for Field Conversion

For DC motors with catalog numbers ending in "P"



NEMA Frame	Kit Catalog Number	Bearing	Enclosure	List Price	Shipping Weight Lbs.
180ATC	180-5002	6206	Drip-Proof	\$ 558.00	18.00
210ATC	210-5001	6207	Drip-Proof or Totally Enclosed	669.00	12.00
250ATC	250-5001	6209	Drip-Proof or Totally Enclosed	1033.00	75.00
280ATC	280-5002	6210	Drip-Proof	1369.00	57.00
320ATC	320-5002	6211	Drip-Proof	1908.00	12.00
360ATC	360-5001	6213	Drip-Proof or Totally Enclosed	2928.00	12.00
400ATC	400-5001	6214	Drip-Proof or Totally Enclosed	3546.00	12.00

Double C-Face Motor Brake Kits

Double C-Face coupler brakes. Mounts on motors with C-Face mounting on brake. Spring set, electrically released.



NEMA Frame	Catalog Number	Brake Rating	List Price	Shipping Weight Lbs.
56C	CBK003-1	3 ft-lb	\$ 414.00	12.00
56C	CBK006-1	6 ft-lb	610.00	11.00
145TC	CBK006-2	6 ft-lb	610.00	12.00
145TC	CBK010-1	10 ft-lb	712.00	12.00
145TC	CBK015-1	15 ft-lb	1522.00	12.00

NOTE: Coil Voltage: 115/208-230

Shaft Grounding Kit

Universal for after market installation.
For additional information contact your Baldor District Office.

Part Number	List Price	Shipping Weight Lbs.
BP5248A05	\$146.00	1.00

D-Flange Kits

Complete kits with hardware necessary for converting Baldor 145T-445T frame rigid base motors to “D-Flange” mounting with base. Please furnish the motor specification number when ordering.



NEMA Frame	Enclosure	Part Number	List Price	Shipping Weight Lbs.
143-145T	TEFC	*35EP1506A01SP	\$ 258.00	12.00
143-145T	OPEN	*35EP1604A01SP	274.00	13.00
182-184T	OPEN	*36EP1405A09SP	280.00	14.00
182-184TD	TEFC	*36EP1304A62SP	143.00	15.00
284-286 U,T	TEFC	10EP1502A01SP	614.00	39.00
324-326 U,T	TEFC	12EP1501A03SP	684.00	61.00
364-365 U,T	OPEN	14EP1601A01SP	880.00	66.00
364-365 U,T	TEFC	14EP1705A01SP	880.00	71.00
404-405 U,T	OPEN	16EP1601A01SP	1094.00	116.00
404-405 U,T	TEFC	16EP1501A01SP	929.00	131.00
444-445 U,T	OPEN	18EP1600A01SP	1557.00	140.00
444-445 U,T	TEFC	18EP1500A01SP	1557.00	170.00
447-449	TEFC	18EP1506A01SP	1557.00	150.00

NOTE: Includes Bearing Retainer

Drip Covers for Field Conversion

Standard ODP Motors to Vertical Mount

NEMA Frame	Kit Catalog Number	List Price	Shipping Weight Lbs.
48-56T	FCD34	\$ 57.00	1.00
56-145T	FCD35	60.00	1.00
182-4T	FCD36	70.00	2.00
213-5T	FCD37	85.00	3.00
254-6T	FCD39	114.00	3.00
284-6T	FCD40	122.00	12.00
324-6T	FCD42	131.00	5.00



Features: Complete kits with all hardware, attaches to endplates with no drilling. Designed to protect open steel band motors from rain, snow and ice when mounted outdoors in a vertical position. Made from heavy steel. Primed and painted inside and out.

Fan Cover/Conduit Boxes for Cast Iron Field Conversion

To convert standard TEFC motors to all cast iron construction

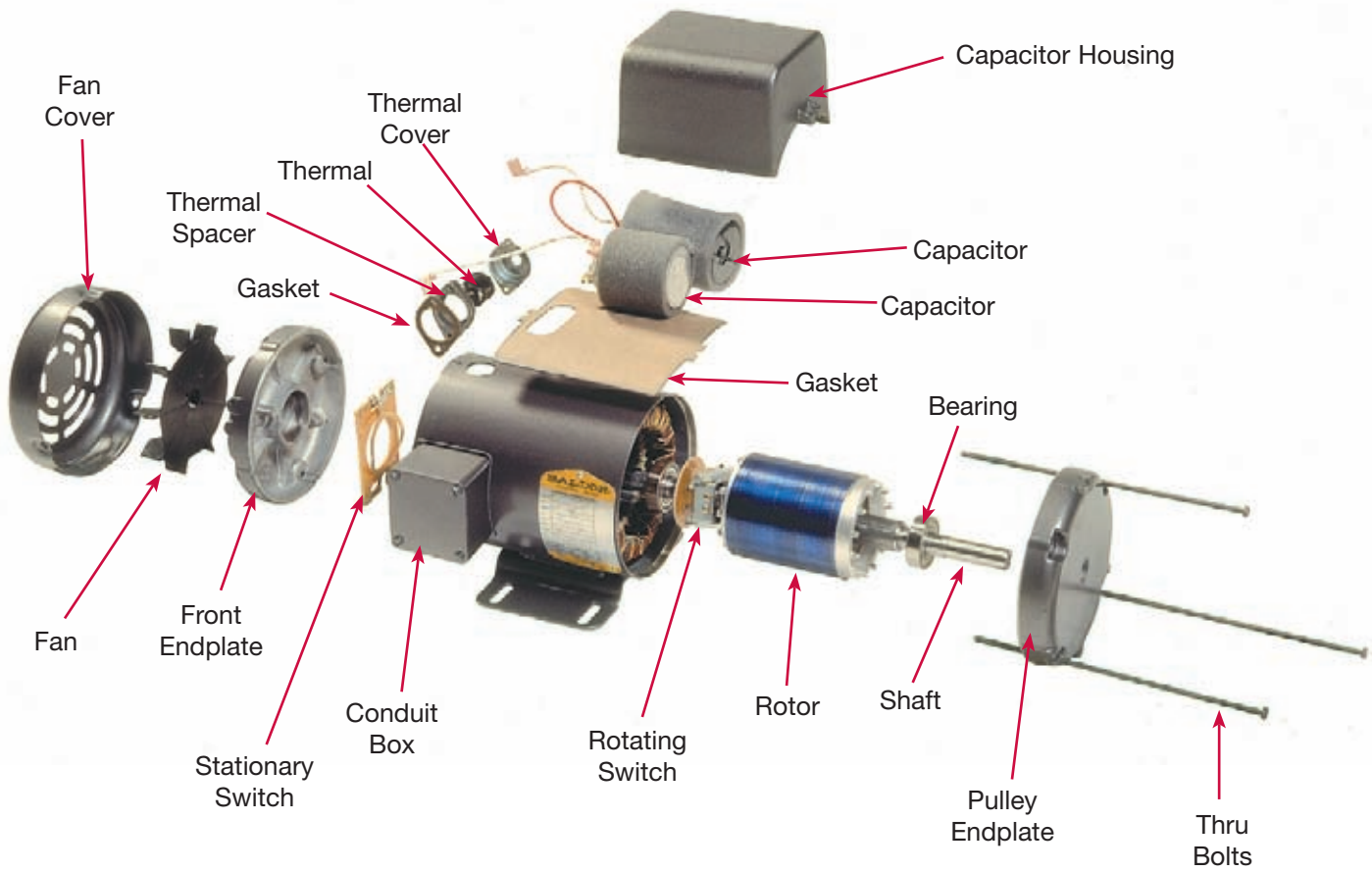
NEMA Frame	Kit Catalog Number	List Price	Shipping Weight Lbs.
143-5T	• FFC05	\$ 114.00	6.00
182-4T	• FFC06	122.00	10.00
213-5T	• FFC07WB	181.00	19.00
254-6 U & T	• FFC09WB	250.00	28.00



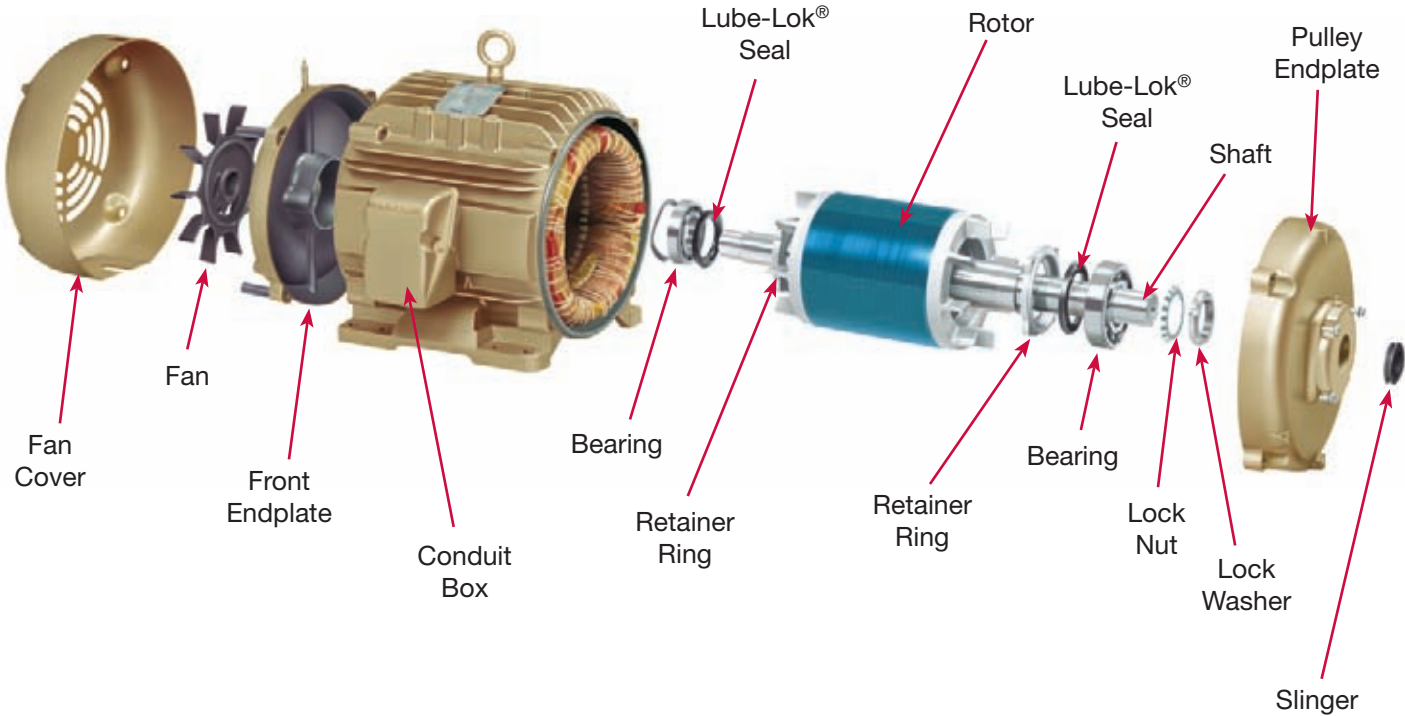
Features: For use in converting to all Cast Iron construction. Not for use on explosion-proof motors.

- Cast Iron

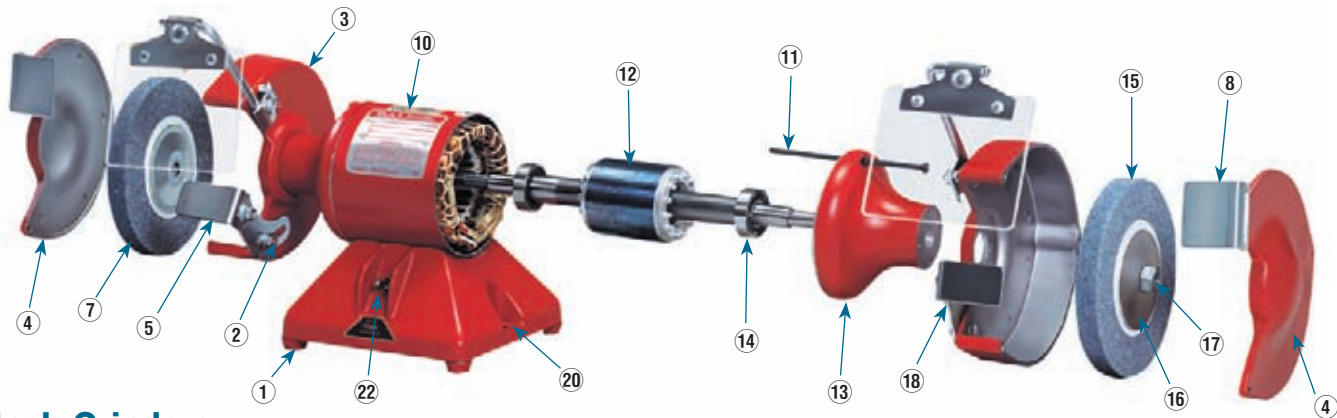
Steel Band AC Motor



Cast Iron AC Motor



Grinders



6 Inch Grinders

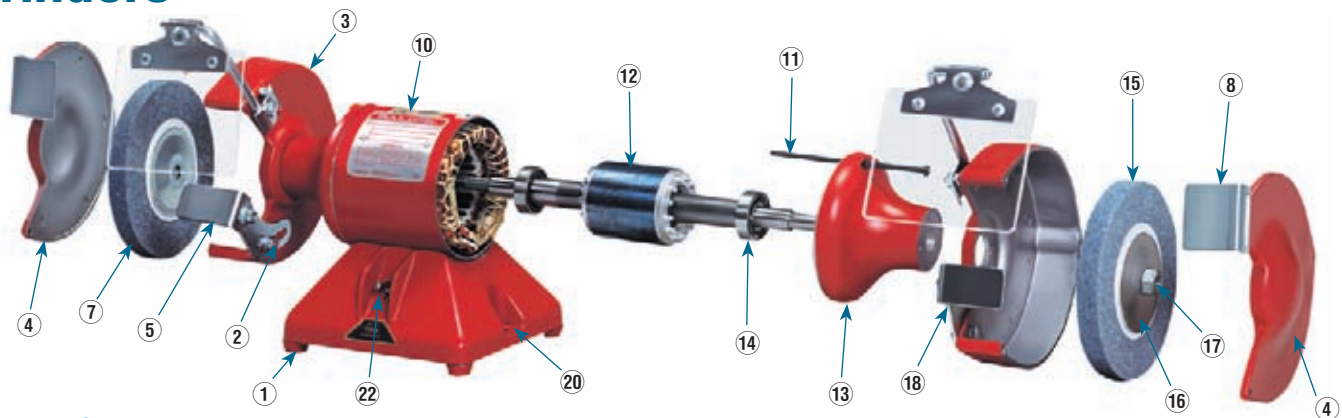
Item Number	Part Description	Part Number 6 Inch Grinders	List Price	Shipping Weight Lbs.
1	Rubber Feet	RM1005A01SP	\$ 2.00	1.00
2	Tool Rest Support, Pressed Steel	HA6048A01SP	7.00	1.00
2A	Tool Rest Support, Cast Iron	HA6064A01SP	16.00	1.00
*3	Guard, Non-Exhaust Type (Right or Left Hand)	G6FH3800SP	20.00	1.00
3A	Guard,Exhaust Type (Right Hand)	G6FH1802A01 (C)	45.00	6.00
3B	Guard, Exhaust Type (Left Hand)	G6FH1800A01SP	45.00	6.00
*4	Guard Cover, Non-Exhaust Type (Right or Left Hand)	G6FH3801SP	23.00	1.00
*4A	Guard Cover, Exhaust Type (Right Hand)	G6FH1803A01SP	36.00	4.00
4B	Guard Cover, Exhaust Type (Left Hand)	G6FH1801A01SP	36.00	4.00
*5	Tool Rest, Pressed Steel (Right or Left Hand)	G6AP1009A01SP	9.00	1.00
*5A	Tool Rest, Cast Iron (Right or Left Hand)	G6AP1008A01SP	28.00	1.00
N/S	Arbor Nut (Left Hand)	XY5020A62SP (1/2-20 L.H.)	4.00	1.00
*7	Grinding Wheel	B66	21.00	2.00
*8	Spark Arrestor, Solid Type	G6AP1003A01SP	9.00	1.00
*8A	Spark Arrestor, Slotted Type	G6AP1002A01SP	12.00	1.00
N/S	Felt Washer	HA1025A01SP	4.00	1.00
10	Wound Stator Assembly	Specify Spec. Number		
11	Thru Bolt	HA3100A03 (C)	4.00	1.00
12	Rotor, with Shaft and Bearings	Specify Spec. Number		
13	Endplate (Right or Left Hand)	G6EP3900A01(C)	28.00	1.00
14	Bearing	BG6203E03SP	24.00	1.00
*15	Grinding Wheel	B67	21.00	2.00
16	Wheel Flange, Inside or Outside, Pressed Steel	HA6113SP	6.00	1.00
16A	Wheel Flange, Inside or Outside,Cast	HA6050A02SP	9.00	1.00
17	Arbor Nut (Right Hand)	XY5020A12SP (1/2-20 R.H.)	3.00	1.00
*18	Tool Rest, Pressed Steel (Right or Left Hand)	G6AP1009A01SP	15.00	1.00
*18A	Tool Rest, Cast Iron (Right or Left Hand)	G6AP1008A01SP	28.00	1.00
N/S	Cord and Plug	LD5001A07 (C)	23.00	1.00
20	Base	G6BA3000SP	34.00	2.00
N/S	Base Cover	G6CB4500A01 (C)	8.00	1.00
22	Switch, On-Off (Single Phase)	SP9017SP	13.00	1.00
N/S	Relay	RE1020SP	22.00	1.00
N/S	Capacitor	Specify Spec. Number		
**N/S	Vinyl Cap To Cover Arbor Nut	RM1010A04 (C)	2.00	1.00
N/S	Spacers For Wire Brush Wheels (3 Required)	HW1000A50 (C)	2.00	1.00

NOTES: * Grinders Only ** Buffers Only N/S = Not Shown

Instruction Sheet for 6" Thru 14" Grinders
 Instruction Sheet for 6" Thru 8 " Grinder-Buffers
 Instruction Sheet for Buffers

MN903 N/C
 MN907 N/C
 MN906 N/C

Grinders



7 Inch Grinders

Item Number	Part Description	Part Number 7 Inch Grinders	List Price	Shipping Weight Lbs.
1	Rubber Feet	RM1005A01SP	\$ 2.00	1.00
2	Tool Rest Support, Pressed Steel	HA6048A01SP	7.00	1.00
2A	Tool Rest Support, Cast Iron	HA6064A01SP	16.00	1.00
3	Guard, Non-Exhaust Type (Right or Left Hand)	G7FH3800SP	29.00	2.00
3A	Guard, Exhaust Type (Right Hand)	G7FH1802A01SP	76.00	9.00
3B	Guard, Exhaust Type (Left Hand)	G7FH1800A01SP	76.00	9.00
4	Guard Cover, Non-Exhaust Type (Right or Left Hand)	G7FH3801SP	37.00	2.00
4A	Guard Cover, Exhaust Type (Right Hand)	G7FH1803A01SP	44.00	7.00
4B	Guard Cover, Exhaust Type (Left Hand)	G7FH1801A01SP	44.00	6.17
5	Tool Rest, Pressed Steel (Right or Left Hand)	G7AP1010A01SP	12.00	1.00
5A	Tool Rest, Cast Iron, (Right or Left Hand)	G6AP1008A01SP	28.00	1.00
N/S	Arbor Nut (Left Hand)	XY6311A62SP (5/8-11L.H.)	4.00	1.00
7	Grinding Wheel	B73	30.00	2.00
8	Spark Arrestor, Solid Type (Use with Non-Exhaust Guards)	G6AP1003A01SP	9.00	1.00
8A	Spark Arrestor, Slotted Type (Use with Exhaust Guard)	G6AP1002A01SP	12.00	1.00
N/S	Felt Washer	HA1025A02 (C)	2.00	1.00
10	Wound Stator Assembly	Specify Spec Number		16.00
11	Thru Bolt	HA3100A11 (C)	4.00	1.00
12	Rotor with Shaft and Bearings	Specify Spec Number		10.00
13	Endplate (Right or Left Hand)	G7EP3900A01 (C)	36.00	2.00
14	Bearing	BG6203C03(C)	22.00	1.00
15	Grinding Wheel	B74	30.00	4.00
16	Wheel Flange, Inside or Outside, Pressed Steel	HA6115A01SP	6.00	1.00
16A	Wheel Flange, Inside or Outside, Cast	HA6096A01SP	12.00	1.00
17	Arbor Nut (Right Hand)	XY6311A12SP (5/8-11R.H.)	4.00	1.00
18	Tool Rest, Pressed Steel (Right or Left Hand)	G7AP1010A01SP	15.00	1.00
18A	Tool Rest, Cast Iron (Right or Left Hand)	G6AP1008A01SP	28.00	1.00
N/S	Cord and Plug	LD5001A07(C)	23.00	1.00
20	Base	G7BA3000(C)	45.00	2.00
N/S	Base Cover	G7CB4500 (C)	12.00	1.00
22	Switch, On-Off (Single Phase)	SP9000SP	23.00	1.00
22A	Switch, On-Off (Three Phase)	SP9004(C)	27.00	1.00
N/S	Spacers for Wire Brush Wheels	(2 Req'd) HA2047A01 (C)	4.00	1.00
N/S	Spacer for Inside Wheel Flange (Non-Exhaust Type)	HA2072 (C)	7.00	1.00
N/S	Spacer for Inside Wheel Flange (Exhaust Type)	HA2040A01SP	7.00	1.00

NOTES: N/S = Not Shown

Instruction Sheet for 6" Thru 14" Grinders

MN903

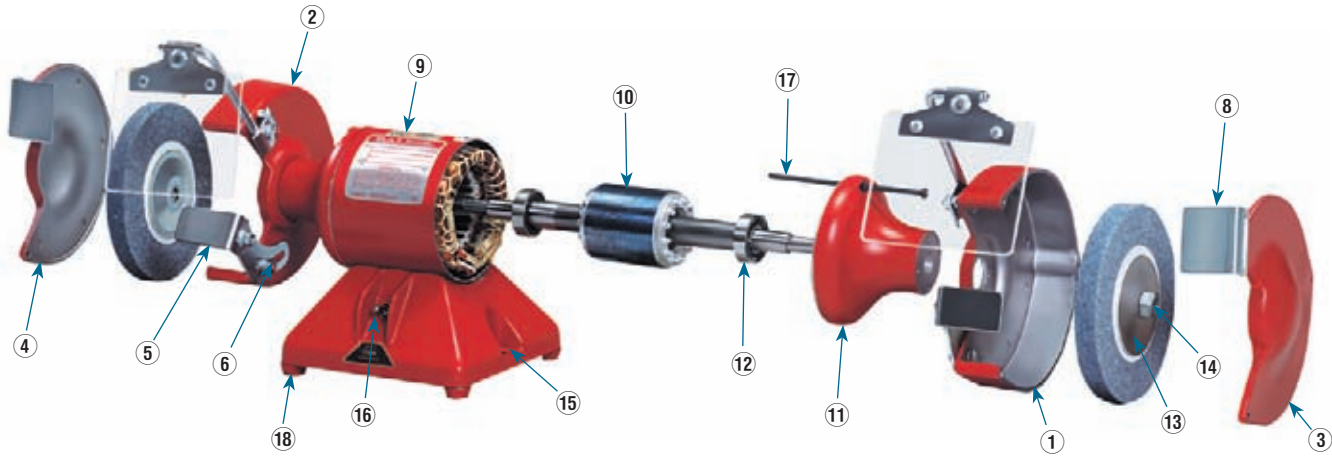
N/C

Instruction Sheet for 6" Thru 8" Grinder-Buffers

MN907

N/C

Grinders



8 Inch Grinders

Item Number	Part Description	Part Number 8 Inch Grinders	List Price	Shipping Weight Lbs.
*1	Guard Right Hand	G8FH1800A01SP	\$130.00	11.00
*2	Guard Left Hand	G8FH1802A01SP	130.00	11.00
*3	Guard Cover Right Hand	G8FH1801A01SP	65.00	7.00
*4	Guard Cover Left Hand	G8FH1803A01SP	65.00	7.00
*5	Tool Rest	G8AP1003A01SP	29.00	2.00
*6	Tool Rest Support	HA6099A01SP	22.00	1.00
N/S	Arbor Nut Left Hand	XY7510A62SP (3/4-10)	6.00	1.00
*8	Spark Arrestor	G6AP1002A01SP	12.00	1.00
9	Wound Stator Assembly	Specify Spec Number		24.00
10	Rotor with Shaft & Bearings	Specify Spec Number		16.00
11	Endplate Right or Left Hand	G8EP3900A01SP	58.00	2.00
12	Bearing	BG6206E03 (C)	41.00	1.00
13	Wheel Flange	HA6098 (C)	11.00	2.00
14	Arbor Nut Right Hand	XY7510A12SP (3/4-10)	3.00	1.00
15	Base	G8BA3000A01 (C)	79.00	4.00
16	Switch, On-Off, Single Phase	SP9000SP	23.00	1.00
16A	Switch, On-Off, Three Phase	SP9004 (C)	27.00	1.00
N/S	Base Cover	G8CB4500A02 (C)	6.00	1.00
N/S	Cord & Plug -Single Phase	LD5001A02 (C)	23.00	1.00
N/S	Capacitor-Oil Type	Specify Spec Number		
N/S	Thru Bolts	HA3100A14 (C)	4.00	1.00
N/S	Rubber Feet	RM1005A01SP	2.00	1.00
**N/S	Bearing Retainer	RB3010 (C)	13.00	1.00
**N/S	Arbor Nut Cover (Vinyl)	RM1010A06 (C)	2.00	1.00
**N/S	Spacer	HA2048A01SP	6.00	1.00

NOTES: * Grinders Only ** Buffers Only N/S = Not Shown

Instruction Sheet for 6" Thru 14" Grinders

MN903

N/C

Instruction Sheet for 6" Thru 8" Grinder-Buffers

MN907

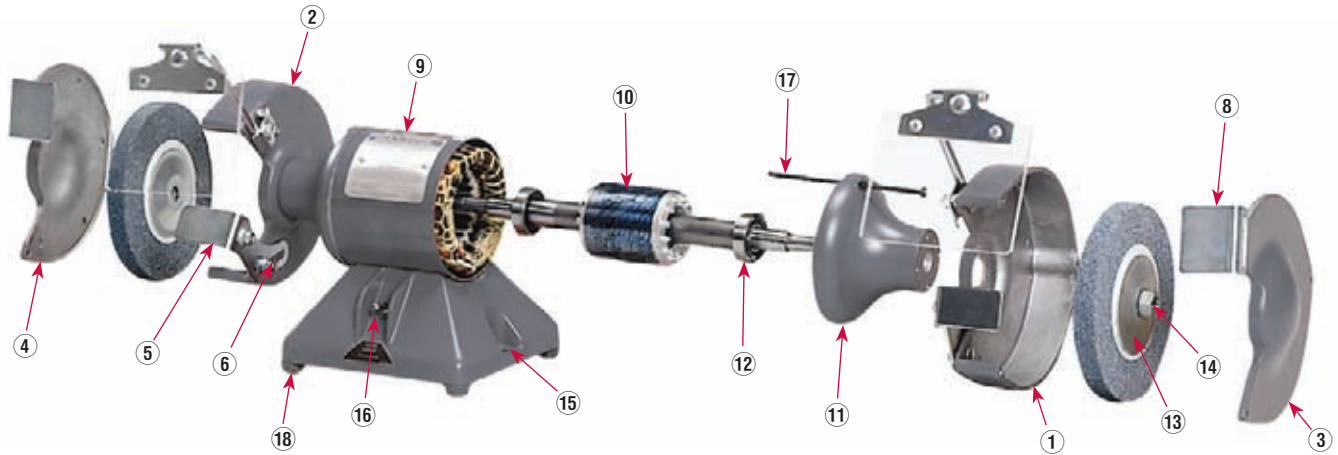
N/C

Instruction Sheet for Buffers

MN906

N/C

Grinders



10 Inch Grinders

Item Number	Part Description	Part Number 10 Inch Grinders	List Price	Shipping Weight Lbs.
*1	Guard Right Hand	G0FH1806A01 (C)	\$183.00	18.00
*2	Guard Left Hand	G0FH1807A01SP	183.00	20.00
*3	Guard Cover Right Hand	G0FH1805A01SP	101.00	11.00
*4	Guard Cover Left Hand	G0FH1804A01 (C)	101.00	12.00
*5	Tool Rest	G8AP1003A01SP	29.00	2.00
*6	Tool Rest Support	HA6101A01SP	22.00	1.00
N/S	Arbor Nut Left Hand	XY8809A62SP (7/8-9)	8.00	1.00
*8	Spark Arrestor	G0AP1002SP	15.00	1.00
9	Wound Stator Assembly	Specify Spec Number		27.00
10	Rotor With Shaft & Bearings	Specify Spec Number		18.00
11	Endplate Right Or Left Hand	G8EP3900A01SP	58.00	2.00
12	Bearing	BG6206E03 (C)	41.00	1.00
13	Wheel Flange	HA6100SP	20.00	2.00
14	Arbor Nut Right Hand	XY8809A12SP (7/8-9)	5.00	1.00
15	Base	G8BA3000A01 (C)	79.00	4.00
16	Switch, On-Off,Single Phase	SP9000SP	23.00	1.00
16A	Switch, On-Off,Three Phase	SP9004 (C)	27.00	1.00
N/S	Base Cover	G8CB4500A02 (C)	6.00	1.00
N/S	Capacitor-Oil Type	Specify Spec Number		1.00
N/S	Thru Bolts	HA3100A14 (C)	4.00	1.00
N/S	Rubber Feet	RM1005A01SP	2.00	1.00
**N/S	Bearing Retainer	RB3010 (C)	13.00	1.00
**N/S	Arbor Nut Cover (Vinyl)	RM1010A05SP	2.00	1.00
**N/S	Spacer	HA2050A01 (C)	7.00	1.00

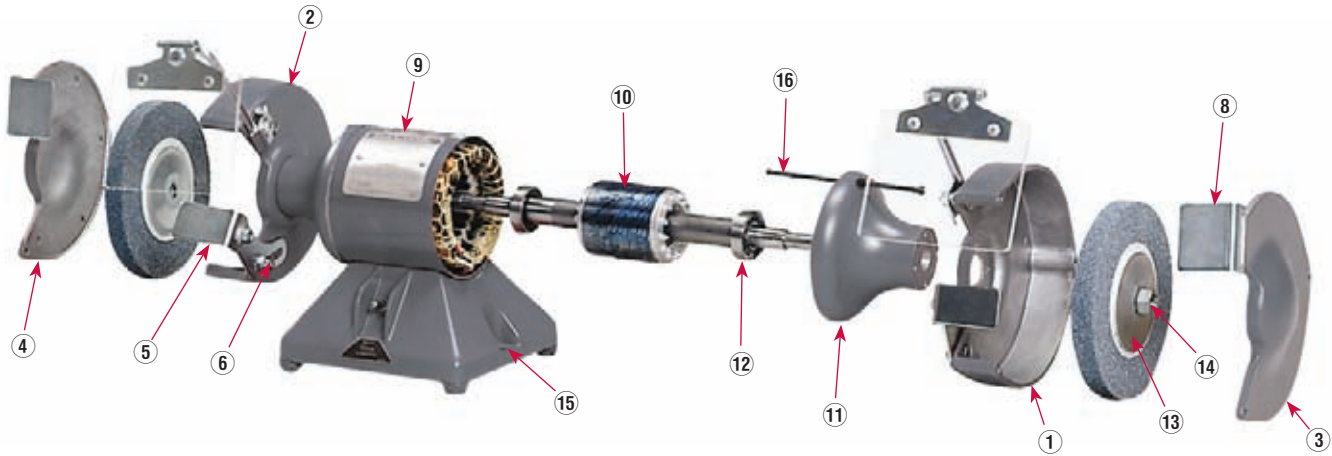
NOTES: * Grinders Only ** Buffers Only N/S = Not Shown

Instruction Sheet for 6" Thru 14" Grinders
Instruction Sheet for Buffers

MN903
MN906

N/C
N/C

Grinders



12 Inch Grinders

Item Number	Part Description	Part Number 12 Inch Grinders	List Price	Shipping Weight Lbs.
*1	Guard R.H.	G2FH1804A01 (C)	\$326.00	31.00
*2	Guard L.H.	G2FH1805A01 (C)	326.00	31.00
*3	Guard Cover R.H.	G2FH1806A01 (C)	141.00	18.00
*4	Guard Cover L.H.	G2FH1807A01 (C)	137.00	17.00
*5	Tool Rest	G2AP1002A01SP	42.00	3.00
*6	Tool Rest Support	HA6049A01SP	33.00	2.00
N/S	Arbor Nut L.H.	XZ2007A62SP (1-1/4--7)	22.00	1.00
*8	Spark Arrestor	G2AP1001 (C)	20.00	1.00
9	Wound Stator Assem.	Specify Spec Number		48.00
10	Rotor With Shaft & Brgs	Specify Spec Number		32.00
11	Endplate R.H. Or L.H.	G2EP1900A01 (C)	139.00	11.00
12	Bearing	BG6208E03 (C)	32.00	1.00
13	Wheel Flange	HA6051SP	25.00	1.00
14	Arbor Nut R.H.	XZ2007A12SP (1-1/4--7)	21.00	1.00
15	Base	G2BA1000A01 (C)	179.00	6.00
N/S	Base Cover	G2CB4500 (C)	18.00	1.00
N/S	Capacitor, Electrolytic	EC1645A06SP	29.00	1.00
N/S	Starter Bracket	Specify Spec Number		
N/S	Starting Relay-Single Ph.	RE5019 (C)	135.00	1.00
16	Thru Bolts	HA3104A13 (C)	4.00	1.00
**N/S	Bearing Retainer	RB1029A01 (C)	29.00	1.00
**N/S	Arbor Nut Cover (Vinyl)	RM1010A07 (C)	4.00	1.00

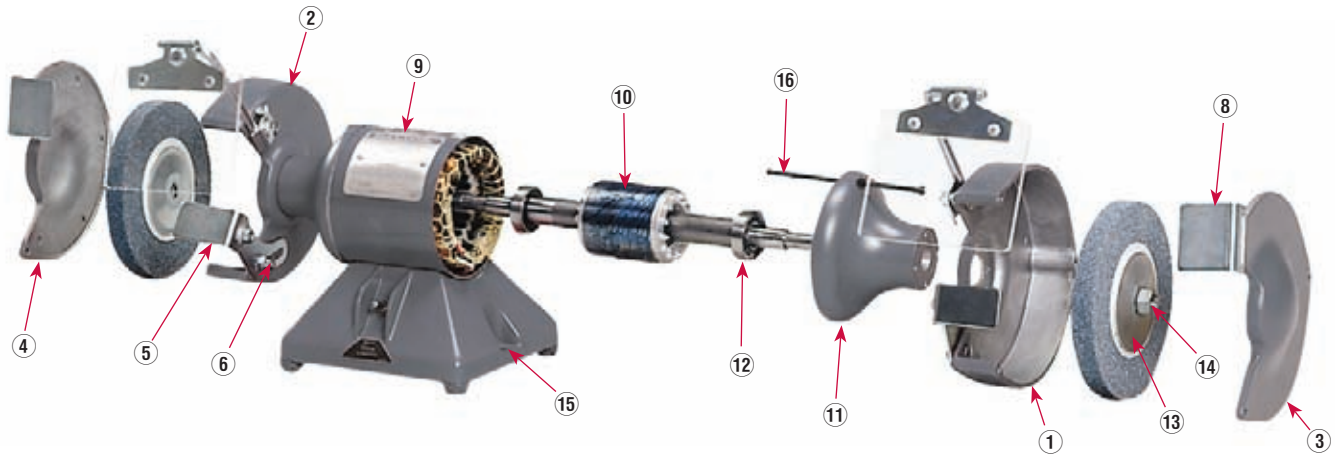
NOTES: * Grinders Only ** Buffers Only N/S = Not Shown

Instruction Sheet for 6" Thru 14" Grinders
 Instruction Sheet for Buffers

MN903
 MN906

N/C
 N/C

Grinders



14 inch Grinders

Item Number	Part Description	Part Number 14 Inch Grinders	List Price	Shipping Weight Lbs.
*1	Guard R.H.	G4FH1800A01 (C)	\$487.00	50.00
*2	Guard L.H.	G4FH1801A01 (C)	470.00	46.00
*3	Guard Cover R.H.	G4FH1802A01 (C)	165.00	26.00
*4	Guard Cover L.H.	G4FH1803A01 (C)	160.00	26.00
*5	Tool Rest	G2AP1002A01SP	42.00	3.00
*6	Tool Rest Support	HA6049A01SP	33.00	2.00
N/S	Arbor Nut L.H.	XZ2007A62SP (1-1/4 - 7)	22.00	1.00
*8	Spark Arrestor	G2AP1001 (C)	20.00	1.00
9	Wound Stator Assem.	Specify Spec Number		88.00
10	Rotor With Shaft & Brgs	Specify Spec Number		60.00
11	Endplate R.H. Or L.H.	G4EP1900A01 (C)	204.00	26.00
12	Bearing	BG6309E03 (C)	49.00	1.00
13	Wheel Flange	HA6051SP	25.00	1.00
14	Arbor Nut R.H.	XZ2007A12SP (1-1/4 - 7)	21.00	1.00
15	Base	G4BA1000A01 (C)	189.00	20.00
N/S	Starter Bracket	Specify Spec Number		
16	Thru Bolts	HA3104A14 (C)	4.00	1.00
**N/S	Bearing Retainer	RB1028A01 (C)	33.00	1.00
**N/S	Arbor Nut Cover (Vinyl)	RM1010A07 (C)	4.00	1.00

NOTES: * Grinders Only ** Buffers Only N/S = Not Shown

Instruction Sheet for 6" Thru 14" Grinders
 Instruction Sheet for Buffers

MN903
 MN906

N/C
 N/C

Polishing Lathes



#340 and #342

Part Description	Part Number #340 and #342	List Price	Shipping Weight Lbs.
Rubber Feet	RM1005A01SP	\$ 2.00	1.00
Switch, Start-Stop	SP9019SP	27.00	1.00
Rotor Assembly (With Shaft & Brgs.)	Specify Spec Number		12.00
Switch, Rotating	Specify Spec Number		1.00
Switch, Stationary	Specify Spec Number		1.00
Chuck Ejector, L.H.	HA6105A01 (C)	21.00	1.00
Felt	HA1025A02 (C)	2.00	1.00
Endplate, L.H.	L4EP3100A02 (C)	24.00	3.00
Wound Stator Assembly	Specify Spec Number		17.00
Thru Bolt	HA3100A29 (C)	4.00	1.00
Ball Bearing	BG6203E03SP	24.00	1.00
Endplate, R.H.	L4EP3100A01 (C)	24.00	3.00
Chuck Ejector, R.H.	HA6105A02 (C)	22.00	1.00
Wavy Washer	HW5100A03SP	2.00	1.00
Felt	HA1025A04 (C)	2.00	1.00
Bearing Guard	HA1000A16SP	2.00	1.00
Base	L4BA1000A02 (C)	43.00	1.00
Base Cover	L4CB4500 (C)	13.00	1.00
Cord And Plug – 115 Volt	LD5001A07 (C)	23.00	1.00
Switch Guard	WD4000A07 (C)	2.00	1.00

Instruction Manual

MN904

N/C

Polishing Lathes



#353T

Part Description	Part Number #353T	List Price	Shipping Weight Lbs.
Rubber Feet	RM1005A01SP	\$ 2.00	1.00
Switch, Start-Stop	SP9008 (C)	27.00	1.00
Rotor Assembly (With Shaft & Brgs.)	Specify Spec Number		14.00
Switch, Rotating	34RS4060SP	29.00	1.00
Switch, Stationary	SP5051A30 (C)	30.00	1.00
Chuck Ejector, L.H.	HA6105A01 (C)	21.00	1.00
Felt	HA1025A02 (C)	2.00	1.00
Endplate, L.H.	L5EP3900A01SP	37.00	1.00
Wound Stator Assembly	Specify Spec Number		21.00
Thru Bolt	HA3100A11 (C)	4.00	1.00
Ball Bearing	BG6203E03SP	24.00	1.00
Endplate, R.H.	L5EP3900A02 (C)	35.00	2.00
Chuck Ejector, R.H.	HA6105A02 (C)	22.00	1.00
Wavy Washer	HW5100A03SP	2.00	1.00
Felt	HA1025A04 (C)	2.00	1.00
Bearing Guard	HA1000A16SP	2.00	1.00
Base	L5BA3000A01 (C)	35.00	1.00
Base Cover	L5CB4500A01 (C)	13.00	1.00
Cord And Plug – 115 Volt	LD5001A02 (C)	23.00	1.00
Thermal Protector	TPMRG63RB (C)	29.00	1.00
Instruction Manual	MN904	N/C	

Polishing Lathes



#359T

Part Description	Part Number #359T	List Price	Shipping Weight Lbs.
Rubber Feet	RM1005A01SP	\$ 2.00	1.00
Switch, Start-Stop	SP9000SP	23.00	1.00
Rotor Assembly (With Shaft & Brgs.)	Specify Spec Number		14.00
Switch, Rotating	34RS2060SP	27.00	1.00
Switch, Stationary	SP5056SP	17.00	1.00
Chuck Ejector, L.H.	HA6105A01 (C)	21.00	1.00
Felt	HA1025A02 (C)	2.00	1.00
Endplate, L.H.	L5EP3900A01SP	37.00	1.00
Wound Stator Assembly	Specify Spec Number		21.00
Thru Bolt	HA3100A11 (C)	4.00	1.00
Ball Bearing	BG6203E03SP	24.00	1.00
Endplate, R.H.	L5EP3900A02 (C)	35.00	2.00
Chuck Ejector, R.H.	HA6105A02 (C)	22.00	1.00
Wavy Washer	HW5100A03SP	2.00	1.00
Felt	HA1025A04 (C)	2.00	1.00
Bearing Guard	HA1000A16SP	2.00	1.00
Base	L5BA3000A01 (C)	35.00	1.00
Base Cover	L5CB4500A01 (C)	13.00	1.00
Cord And Plug – 115 Volt	LD5001A02 (C)	23.00	1.00
Thermal Protector	TPMRJ26RBSP	24.00	1.00
Instruction Manual	MN904	N/C	

Polishing Lathes



#380T



#380WCT

#380T and #380WCT

Part Description	Part Number #380T and #380WCT	List Price	Shipping Weight Lbs.
Rubber Feet	RM1005A01SP	\$ 2.00	1.00
Switch, Start-Stop	SP9019SP	27.00	1.00
Rotor Assembly (With Shaft & Brgs.)	Specify Spec Number		17.00
Switch, Rotating	34RS4050SP	20.00	1.00
Switch, Stationary	SP5051A38 (C)	31.00	1.00
Chuck Ejector, L.H.	HA6105A01 (C)	21.00	1.00
Felt	HA1025A02 (C)	2.00	1.00
Endplate, L.H.	L5EP3900A01SP	37.00	2.00
Wound Stator Assembly	Specify Spec Number		25.00
Thru Bolt	*HA3150A09 (C)	4.00	1.00
Ball Bearing	BG6203E03SP	24.00	1.00
Endplate, R.H.	**L5EP3900A02 (C)	35.00	2.00
Chuck Ejector, R.H.	HA6105A02 (C)	22.00	1.00
Wavy Washer	HW5100A03SP	2.00	1.00
Felt	HA1025A04 (C)	2.00	1.00
Bearing Guard	HA1000A16SP	2.00	1.00
Base	L5BA3000A01 (C)	35.00	1.00
Base Cover	L5CB4500A01 (C)	13.00	1.00
Cord And Plug – 115 Volt	LD5001A02 (C)	23.00	1.00
Thermal Protector	TPMRH00EB	18.00	1.00
Capacitor (Electrolytic)	EC1108A01 (CC)	12.00	1.00

NOTES: *Thru Bolts For #380T and #380 WCT are HA3100A12

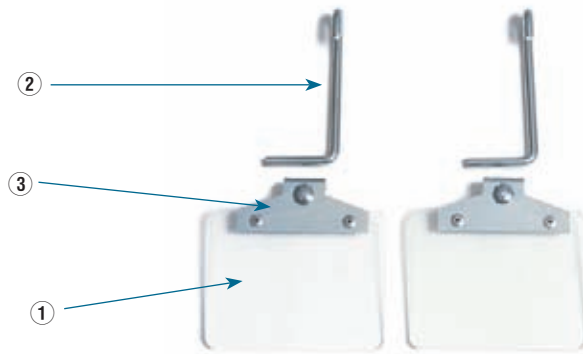
** Endplate R.H. For #380T and #380WCT are L35EP1900A01

Instruction Manual

MN904

N/C

Eye Shields



GA10 (G6-220)

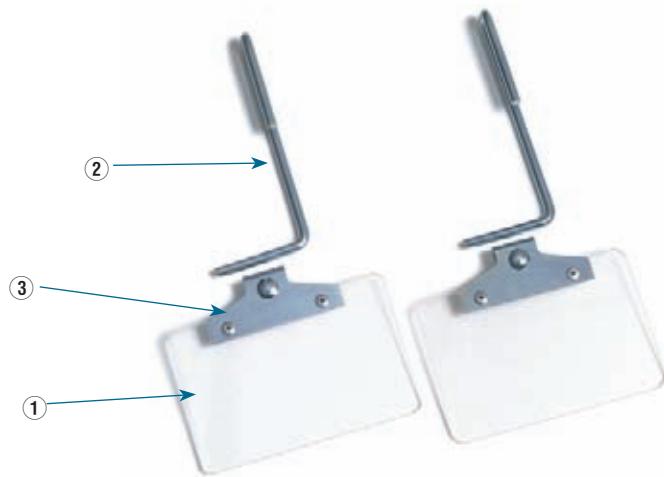
Item Number	Part Description	Part Number GA10 (G6-220)	List Price	Shipping Weight Lbs.
1	Plexiglas Pane	G6AP5001A01A	\$17.00	1.00
2	Mounting Arm	HA6093A01SP	12.00	1.00
3	Mounting Arm Clamp	HA6094A01SP	6.00	1.00

NOTE: Plexiglas Pane on GA10 and GA11 Include Mounting Bracket

Instruction Manual

MN909

N/C



GA11 (A-516)

Item Number	Part Description	Part Number GA11 (A-516)	List Price	Shipping Weight Lbs.
1	Plexiglas Pane	G7AP5003A01SP	\$17.00	1.00
2	Mounting Arm	HA6103A01SP	12.00	1.00
3	Mounting Arm Clamp	HA6094A01SP	6.00	1.00

NOTE: Plexiglas Pane on GA10 and GA11 Include Mounting Bracket

Instruction Manual

MN909

N/C

Eye Shields



GA9 (G7-236) and GA9S (G7-281)

Item Number	Part Description	Part Number GA9 (G7-236) and GA9S (G7-281)	List Price	Shipping Weight Lbs.
1	Plexiglas Pane	G7AP1007A01SP	\$14.00	1.00
2	Mounting Arm	HA6103A01SP	12.00	1.00
N/S	Mounting Arm Clamp	HA6094A01SP	6.00	1.00
4	Frame	G7AP1006(C)	29.00	1.00
5	Cord With Plug	LD5001A02(C)	23.00	1.00
N/S	Lamp Socket	WD4003A01(C)	7.00	1.00
7	On-Off Switch (GA9S & GA9SR Only)	SP9026(C)	13.00	1.00
N/S	Swivel Bracket (Bulb Socket Retainer Plate)	HA6102A01SP	13.00	1.00
N/S	Cord Strain Relief	WD4102A01(C)	2.00	1.00

NOTES: Parts for GA9 and GA9S also apply to GA9R and GA9SR
No Bulbs are supplied. Rough service bulbs are suggested.

Instruction Manual

MN909

N/C

Brushes and Brush Holders for Gearmotors

All Stock Brushes are sold in sets of two.



Catalog Number	Spec Number	Brush Number	List Price	Brush Holder	List Price
GP12511	32760	BP5052BP01SP	\$11.00	BP4529SP	\$6.00
GP12512	32759	BP5052BP01SP	11.00	BP4529SP	6.00
GP12514	32758	BP5052BP01SP	11.00	BP4529SP	6.00
GP12516	32740	BP5052BP01SP	11.00	BP4529SP	6.00
GP13530	32755	BP5052BP01SP	11.00	BP4529SP	6.00
GP13531	32754	BP5052BP01SP	11.00	BP4529SP	6.00
GP13532	32753	BP5052BP01SP	11.00	BP4529SP	6.00
GP13533	32749	BP5052BP01SP	11.00	BP4529SP	6.00
GP13536	32739	BP5052BP01SP	11.00	BP4529SP	6.00
GP231001	23A010Z005G1	BP5060BD02SP	20.00	BP4517	6.00
GP231002	23A010Z002G2	BP5060BD02SP	20.00	BP4517	6.00
GP231003	23A010Z001G1	BP5060BD02SP	20.00	BP4517	6.00
GP231004	23A217Z002G2	BP5060BD02SP	20.00	BP4517	6.00
GP231005	23A012Z001G1	BP5060BD02SP	20.00	BP4517	6.00
GP232001	23A006Z002G1	BP5060BD02SP	20.00	BP4517	6.00
GP232002	23A123Z002G1	BP5060BD02SP	20.00	BP4517	6.00
GP232003	23A217Z002G1	BP5060BD02SP	20.00	BP4517	6.00
GP232004	23A005Z001G1	BP5060BD02SP	20.00	BP4517	6.00
GP232005	23A005Z006G2	BP5060BD02SP	20.00	BP4517	6.00
GP232006	23A005Z005G2	BP5060BD02SP	20.00	BP4517	6.00
GP232007	23A005Z005G1	BP5060BD02SP	20.00	BP4517	6.00
GP233001	23A123Z003G1	BP5060BD02SP	20.00	BP4517	6.00
GP233002	23A123Z003G2	BP5060BD02SP	20.00	BP4517	6.00
GP233003	23A123Z003G3	BP5060BD02SP	20.00	BP4517	6.00
GP233004	23A215Z003G1	BP5060BD02SP	20.00	BP4517	6.00
GP233005	23A215Z003G2	BP5060BD02SP	20.00	BP4517	6.00
GP233006	23A215Z003G3	BP5060BD02SP	20.00	BP4517	6.00
GP233007	23A123Z003G4	BP5060BD02SP	20.00	BP4517	6.00
GP233020	23A005Z007G1	BP5060BF02SP	26.00	BP4517	6.00
GP233021	23A123Z004G1	BP5060BF02SP	26.00	BP4517	6.00
GP233022	23A123Z004G2	BP5060BF02SP	26.00	BP4517	6.00
GP233023	23A123Z004G3	BP5060BF02SP	26.00	BP4517	6.00
GP233024	23A215Z004G1	BP5060BF02SP	26.00	BP4517	6.00
GP233025	23A215Z004G2	BP5060BF02SP	26.00	BP4517	6.00
GP233026	23A215Z004G3	BP5060BF02SP	26.00	BP4517	6.00
GP233027	23A005Z008G1	BP5060BF02SP	26.00	BP4517	6.00
GP233028	23A005Z008G4	BP5060BF02SP	26.00	BP4517	6.00
GP233029	23A005Z008G3	BP5060BF02SP	26.00	BP4517	6.00

NOTE: Shipping weights for parts 3 lbs. or less.

Brushes and Brush Holders for Gearmotors

All Stock Brushes are sold in sets of two.



Catalog Number	Spec Number	Brush Number	List Price	Brush Holder	List Price
GP2501	25A090Z009G1	BP5040AL01	\$ 9.00	BP4533	8.00
GP2503	25A090Z009G2	BP5040AL01	9.00	BP4533	8.00
GP2506	25A090Z009G4	BP5040AL01	9.00	BP4533	8.00
GP2507	25A090Z009G3	BP5040AL01	9.00	BP4533	8.00
GP3301	33-2408Z148G1K2	BP5011P01SP	38.00	33RK5004SP	86.00
GP3303	33-2408Z148G1K3	BP5011P01SP	38.00	33RK5004SP	86.00
GP3306	33-2408Z148G1K1	BP5011P01SP	38.00	33RK5004SP	86.00
GP3307	33-2408Z148G1K4	BP5011P01SP	38.00	33RK5004SP	86.00
GP7304	27314F	BP5052BP01SP	11.00	BP4529SP	6.00
GP7400	558K	BP5052BP01SP	11.00	BP4529SP	6.00
GP7401	24A001Z010G3	BP5052BP01SP	11.00	BP4529SP	6.00
GP7402	24A001Z010G1	BP5052BP01SP	11.00	BP4529SP	6.00
GP7403	24A001Z010G2	BP5052BP01SP	11.00	BP4529SP	6.00
GP7404	24A001Z010G4	BP5052BP01SP	11.00	BP4529SP	6.00
GP7405	694J	BP5052BP01SP	11.00	BP4529SP	6.00
GP7406	525J	BP5052BP01SP	11.00	BP4529SP	6.00
GP7407	695J	BP5052BP01SP	11.00	BP4529SP	6.00
GP7408	696H	BP5052BP01SP	11.00	BP4529SP	6.00
GP7409	697H	BP5052BP01SP	11.00	BP4529SP	6.00
GP7413	31195B	BP5052BP01SP	11.00	BP4529SP	6.00
GP7420	18433H	BP5052BN01SP	19.00	BP4529SP	6.00
GP7421	24A019Z029G2	BP5052BN01SP	19.00	BP4529SP	6.00
GP7422	24A019Z029G3	BP5052BN01SP	19.00	BP4529SP	6.00
GP7423	24A019Z029G4	BP5052BN01SP	19.00	BP4529SP	6.00
GP7424	24A019Z029G5	BP5052BN01SP	19.00	BP4529SP	6.00
GP7425	635J	BP5052BN01SP	19.00	BP4529SP	6.00
GP7426	17423K	BP5052BN01SP	19.00	BP4529SP	6.00
GP7427	19811H	BP5052BN01SP	19.00	BP4529SP	6.00
GP7428	19270H	BP5052BN01SP	19.00	BP4529SP	6.00
GP7429	18648K	BP5052BN01SP	19.00	BP4529SP	6.00
GP7433	19198H	BP5052BN01SP	19.00	BP4529SP	6.00
GPF13514	31884B	BP5052BP01SP	11.00	BP4529SP	6.00
GPF13515	31366B	BP5052BP01SP	11.00	BP4529SP	6.00
GPF13516	31367B	BP5052BP01SP	11.00	BP4529SP	6.00
GPF13517	31368B	BP5052BP01SP	11.00	BP4529SP	6.00
GPF13530	31369B	BP5052BP01SP	11.00	BP4529SP	6.00
GPF13532	31371B	BP5052BP01SP	11.00	BP4529SP	6.00

NOTE: Shipping weights for parts 3 lbs. or less.

Brushes and Brush Holders for Gearmotors

All Stock Brushes are sold in sets of two.



Catalog Number	Spec Number	Brush Number	List Price	Brush Holder	List Price
GPP12501	24A002Z011G1	BP5052BP01SP	\$11.00	BP4529SP	\$ 6.00
GPP12502	24A002Z011G2	BP5052BP01SP	11.00	BP4529SP	6.00
GPP12503	24A002Z011G5	BP5052BP01SP	11.00	BP4529SP	6.00
GPP12504	24A002Z011G4	BP5052BP01SP	11.00	BP4529SP	6.00
GPP12505	24A002Z011G3	BP5052BP01SP	11.00	BP4529SP	6.00
GPP12521	31037E	BP5066P01SP	15.00	BBR1100SP	8.00
GPP12525	31036E	BP5066P01SP	15.00	BBR1100SP	8.00
GPP12540	30976B	BP5066P01SP	15.00	BBR1100SP	8.00
GPP12541	30977B	BP5066P01SP	15.00	BBR1100SP	8.00
GPP12542	30978B	BP5066P01SP	15.00	BBR1100SP	8.00
GPP12543	30979B	BP5066P01SP	15.00	BBR1100SP	8.00
GPP12544	30980B	BP5066P01SP	15.00	BBR1100SP	8.00
GPP12545	30981B	BP5066P01SP	15.00	BBR1100SP	8.00
GPP12547	30982B	BP5066P01SP	15.00	BBR1100SP	8.00
GPP12560	31108E	BP5052BN01SP	19.00	BBR1100SP	8.00
GPP12561	31109E	BP5052BN01SP	19.00	BBR1100SP	8.00
GPP12564	31110E	BP5052BN01SP	19.00	BBR1100SP	8.00
GPP12567	31111E	BP5052BN01SP	19.00	BBR1100SP	8.00
GPP231108	23A134Z001G2	BP5060BD02SP	20.00	BP4517	6.00
GPP231109	23A011Z001G2	BP5060BD02SP	20.00	BP4517	6.00
GPP231110	23A011Z006G1	BP5060BD02SP	20.00	BP4517	6.00
GPP232110	23A011Z002G1	BP5060BD02SP	20.00	BP4517	6.00
GPP233111	23A011Z010G2	BP5060BD02SP	20.00	BP4517	6.00
GPP233112	23A011Z010G1	BP5060BD02SP	20.00	BP4517	6.00
GPP233120	23A011Z007G1	BP5060BF02SP	26.00	BP4517	6.00
GPP233121	23A011Z028G1	BP5060BF02SP	26.00	BP4517	6.00
GPP233140	23A008Z010G1	BP5060BD02SP	20.00	BP4517	6.00
GPP233141	23A008Z003G1	BP5060BD02SP	20.00	BP4517	6.00
GPP2530	25A047Z033G1	BP5040P04 (C)	8.00	BP4533	8.00
GPP2534	25A047Z033G2	BP5040P04 (C)	8.00	BP4533	8.00
GPP2538	25A047Z033G3	BP5040P04 (C)	8.00	BP4533	8.00
GPP3340	33-2328Z148G1K3	BP5011P01SP	38.00	33RK5004SP	86.00
GPP3344	33-2328Z148G1K2	BP5011P01SP	38.00	33RK5004SP	86.00
GPP3348	33-2328Z148G1K1	BP5011P01SP	38.00	33RK5004SP	86.00
GPP3370	33-2328Z131K3	BP5011AB01SP	17.00	33RK5004SP	86.00
GPP3374	33-2328Z131K2	BP5011AB01SP	17.00	33RK5004SP	86.00
GPP3378	33-2328Z131K1	BP5011AB01SP	17.00	33RK5004SP	86.00

NOTE: Shipping weights for parts 3 lbs. or less.

Brushes and Brush Holders for Gearmotors

All Stock Brushes are sold in sets of two.



Catalog Number	Spec Number	Brush Number	List Price	Brush Holder	List Price
GPP3380	33-2328Z160K3	BP5011AB01SP	\$17.00	33RK5004SP	\$86.00
GPP3384	33-2328Z160K2	BP5011AB01SP	17.00	33RK5004SP	86.00
GPP3388	33-2328Z160K1	BP5011AB01SP	17.00	33RK5004SP	86.00
GPP7450	31746A	BP5028P01SP	11.00	BP4529SP	6.00
GPP7451	31744A	BP5052BP01SP	11.00	BP4529SP	6.00
GPP7452	31742A	BP5052BP01SP	11.00	BP4529SP	6.00
GPP7453	31740A	BP5052BP01SP	11.00	BP4529SP	6.00
GPP7454	31738A	BP5052BP01SP	11.00	BP4529SP	6.00
GPP7455	31736A	BP5052BP01SP	11.00	BP4529SP	6.00
GPP7456	31733A	BP5052BP01SP	11.00	BP4529SP	6.00
GPP7457	31731A	BP5052BP01SP	11.00	BP4529SP	6.00
GPP7458	31728A	BP5052BP01SP	11.00	BP4529SP	6.00
GPP7459	31725A	BP5052BP01SP	11.00	BP4529SP	6.00
GPP7460	31735A	BP5052BP01SP	11.00	BP4529SP	6.00
GPP7461	31732A	BP5052BP01SP	11.00	BP4529SP	6.00
GPP7462	31727A	BP5052BP01SP	11.00	BP4529SP	6.00
GPP7470	31747A	BP5052BN01SP	19.00	BP4529SP	6.00
GPP7471	31745A	BP5052BN01SP	19.00	BP4529SP	6.00
GPP7472	31743A	BP5052BN01SP	19.00	BP4529SP	6.00
GPP7473	31741A	BP5052BN01SP	19.00	BP4529SP	6.00
GPP7474	31739A	BP5052BN01SP	19.00	BP4529SP	6.00
GPP7475	31737A	BP5052BN01SP	19.00	BP4529SP	6.00
GPP7476	31734A	BP5052BN01SP	19.00	BP4529SP	6.00
GPP7477	31730A	BP5052BN01SP	19.00	BP4529SP	6.00
GPP7478	31729A	BP5052BN01SP	19.00	BP4529SP	6.00
GPP7479	31726A	BP5052BN01SP	19.00	BP4529SP	6.00

NOTE: Shipping weights for parts 3 lbs. or less.

Drive End and Opposite Drive End Bearings for Gearmotors



Catalog Number	Spec Number	Drive End Bearing	List Price	Opposite Drive End Bearing	List Price
GP12511	32760	BG60R8C03	\$19.00	BG6000C03	\$6.00
GP12512	32759	BG60R8C03	19.00	BG6000C03	6.00
GP12514	32758	BG60R8C03	19.00	BG6000C03	6.00
GP12516	32740	BG60R8C03	19.00	BG6000C03	6.00
GP13530	32755	BG60R8C03	19.00	BG6000C03	6.00
GP13531	32754	BG60R8C03	19.00	BG6000C03	6.00
GP13532	32753	BG60R8C03	19.00	BG6000C03	6.00
GP13533	32749	BG60R8C03	19.00	BG6000C03	6.00
GP13536	32739	BG60R8C03	19.00	BG6000C03	6.00
GP231001	23A010Z005G1	BG6200C03	17.00	BG6608C03	3.00
GP231002	23A010Z002G2	BG6200C03	17.00	BG6608C03	3.00
GP231003	23A010Z001G1	BG6200C03	17.00	BG6608C03	3.00
GP231004	23A217Z002G2	BG6200C03	17.00	BG6608C03	3.00
GP231005	23A012Z001G1	BG6200C03	17.00	BG6608C03	3.00
GP232001	23A006Z002G1	BG6200C03	17.00	BG6608C03	3.00
GP232002	23A123Z002G1	BG6200C03	17.00	BG6608C03	3.00
GP232003	23A217Z002G1	BG6200C03	17.00	BG6608C03	3.00
GP232004	23A005Z001G1	BG6200C03	17.00	BG6608C03	3.00
GP232005	23A005Z006G2	BG6200C03	17.00	BG6608C03	3.00
GP232006	23A005Z005G2	BG6200C03	17.00	BG6608C03	3.00
GP232007	23A005Z005G1	BG6200C03	17.00	BG6608C03	3.00
GP233001	23A123Z003G1	BG6200C03	17.00	BG6608C03	3.00
GP233002	23A123Z003G2	BG6200C03	17.00	BG6608C03	3.00
GP233003	23A123Z003G3	BG6200C03	17.00	BG6608C03	3.00
GP233004	23A215Z003G1	BG6200C03	17.00	BG6608C03	3.00
GP233005	23A215Z003G2	BG6200C03	17.00	BG6608C03	3.00
GP233006	23A215Z003G3	BG6200C03	17.00	BG6608C03	3.00
GP233007	23A123Z003G4	BG6200C03	17.00	BG6608C03	3.00
GP233020	23A005Z007G1	BG6200C03	17.00	BG6608C03	3.00
GP233021	23A123Z004G1	BG6200C03	17.00	BG6608C03	3.00
GP233022	23A123Z004G2	BG6200C03	17.00	BG6608C03	3.00
GP233023	23A123Z004G3	BG6200C03	17.00	BG6608C03	3.00
GP233024	23A215Z004G1	BG6200C03	17.00	BG6608C03	3.00
GP233025	23A215Z004G2	BG6200C03	17.00	BG6608C03	3.00
GP233026	23A215Z004G3	BG6200C03	17.00	BG6608C03	3.00
GP233027	23A005Z008G1	BG6200C03	17.00	BG6608C03	3.00
GP233028	23A005Z008G4	BG6200C03	17.00	BG6608C03	3.00
GP233029	23A005Z008G3	BG6200C03	17.00	BG6608C03	3.00

NOTE: Shipping weights for parts 3 lbs. or less

Drive End and Opposite Drive End Bearings for Gearmotors



Catalog Number	Spec Number	Drive End Bearing	List Price	Opposite Drive End Bearing	List Price
GP2501	25A090Z009G1	BG6203C03	\$22.00	BG6203C03	\$22.00
GP2503	25A090Z009G2	BG6203C03	22.00	BG6203C03	22.00
GP2506	25A090Z009G4	BG6203C03	22.00	BG6203C03	22.00
GP2507	25A090Z009G3	BG6203C03	22.00	BG6203C03	22.00
GP3301	33-2408Z148G1K2	BG6203E03SP	24.00	BG6203E03SP	24.00
GP3303	33-2408Z148G1K3	BG6203E03SP	24.00	BG6203E03SP	24.00
GP3306	33-2408Z148G1K1	BG6203E03SP	24.00	BG6203E03SP	24.00
GP3307	33-2408Z148G1K4	BG6203E03SP	24.00	BG6203E03SP	24.00
GP7304	27314F	BG60R8C03	19.00	BG6200C03	16.00
GP7400	558K	BG60R8C03	19.00	BG6200C03	16.00
GP7401	24A001Z010G3	BG6200C03	17.00	BG6000C03	16.00
GP7402	24A001Z010G1	BG6200C03	17.00	BG6000C03	16.00
GP7403	24A001Z010G2	BG6200C03	17.00	BG6000C03	16.00
GP7404	24A001Z010G4	BG6200C03	17.00	BG6000C03	16.00
GP7405	694J	BG60R8C03	19.00	BG6200C03	16.00
GP7406	525J	BG60R8C03	19.00	BG6200C03	16.00
GP7407	695J	BG60R8C03	19.00	BG6200C03	16.00
GP7408	696H	BG60R8C03	19.00	BG6200C03	16.00
GP7409	697H	BG60R8C03	19.00	BG6200C03	16.00
GP7413	31195B	BG60R8C03	19.00	BG6200C03	16.00
GP7420	18433H	BG60R8C03	19.00	BG6200C03	16.00
GP7421	24A019Z029G2	BG6200C03	17.00	BG6000C03	6.00
GP7422	24A019Z029G3	BG6200C03	17.00	BG6000C03	6.00
GP7423	24A019Z029G4	BG6200C03	17.00	BG6000C03	6.00
GP7424	24A019Z029G5	BG6200C03	17.00	BG6000C03	6.00
GP7425	635J	BG60R8C03	19.00	BG6200C03	16.00
GP7426	17423K	BG60R8C03	19.00	BG6200C03	16.00
GP7427	19811H	BG60R8C03	19.00	BG6200C03	16.00
GP7428	19270H	BG60R8C03	19.00	BG6200C03	16.00
GP7429	18648K	BG60R8C03	19.00	BG6200C03	16.00
GP7433	19198H	BG60R8C03	19.00	BG6200C03	16.00
GPF13514	31884B	BG60R8C03	19.00	BG6000C03	6.00
GPF13515	31366B	BG60R8C03	19.00	BG6000C03	6.00
GPF13516	31367B	BG60R8C03	19.00	BG6000C03	6.00
GPF13517	31368B	BG60R8C03	19.00	BG6000C03	6.00
GPF13530	31369B	BG60R8C03	19.00	BG6000C03	6.00
GPF13532	31371B	BG60R8C03	19.00	BG6000C03	6.00

NOTE: Shipping weights for parts 3 lbs. or less

Drive End and Opposite Drive End Bearings for Gearmotors



Catalog Number	Spec Number	Drive End Bearing	List Price	Opposite Drive End Bearing	List Price
GPP12501	24A002Z011G1	BG6000C03	\$ 6.00	BG6000C03	\$ 6.00
GPP12502	24A002Z011G2	BG6000C03	6.00	BG6000C03	6.00
GPP12503	24A002Z011G5	BG6000C03	6.00	BG6000C03	6.00
GPP12504	24A002Z011G4	BG6000C03	6.00	BG6000C03	6.00
GPP12505	24A002Z011G3	BG6000C03	6.00	BG6000C03	6.00
GPP12521	31037E	BG60R8C03	19.00	BG6000C03	6.00
GPP12525	31036E	BG60R8C03	19.00	BG6000C03	6.00
GPP12540	30976B	BG60R8C03	19.00	BG6000C03	6.00
GPP12541	30977B	BG60R8C03	19.00	BG6000C03	6.00
GPP12542	30978B	BG60R8C03	19.00	BG6000C03	6.00
GPP12543	30979B	BG60R8C03	19.00	BG6000C03	6.00
GPP12544	30980B	BG60R8C03	19.00	BG6000C03	6.00
GPP12545	30981B	BG60R8C03	19.00	BG6000C03	6.00
GPP12547	30982B	BG60R8C03	19.00	BG6000C03	6.00
GPP12560	31108E	BG60R8C03	19.00	BG6000C03	6.00
GPP12561	31109E	BG60R8C03	19.00	BG6000C03	6.00
GPP12564	31110E	BG60R8C03	19.00	BG6000C03	6.00
GPP12567	31111E	BG60R8C03	19.00	BG6000C03	6.00
GPP231108	23A134Z001G2	BG6200C03	17.00	BG6608E03	6.00
GPP231109	23A011Z001G2	BG6200C03	17.00	BG6608E03	6.00
GPP231110	23A011Z006G1	BG6200C03	17.00	BG6608E03	6.00
GPP232110	23A011Z002G1	BG6200C03	17.00	BG6608E03	6.00
GPP233111	23A011Z010G2	BG6200C03	17.00	BG6608E03	6.00
GPP233112	23A011Z010G1	BG6200C03	17.00	BG6608E03	6.00
GPP233120	23A011Z007G1	BG6200C03	17.00	BG6608E03	6.00
GPP233121	23A011Z028G1	BG6200C03	17.00	BG6608E03	6.00
GPP233140	23A008Z010G1	BG6200C03	17.00	BG6608E03	6.00
GPP233141	23A008Z003G1	BG6200C03	17.00	BG6608E03	6.00
GPP2530	25A047Z033G1	BG6203C03	22.00	BG6203C03	22.00
GPP2534	25A047Z033G2	BG6203C03	22.00	BG6203C03	22.00
GPP2538	25A047Z033G3	BG6203C03	22.00	BG6203C03	22.00
GPP3340	33-2328Z148G1K3	BG6203E03SP	24.00	BG6203E03	22.00
GPP3344	33-2328Z148G1K2	BG6203E03SP	24.00	BG6203E03	22.00
GPP3348	33-2328Z148G1K1	BG6203E03SP	24.00	BG6203E03	22.00
GPP3370	33-2328Z131K3	BG6203E03SP	24.00	BG6203E03	22.00
GPP3374	33-2328Z131K2	BG6203E03SP	24.00	BG6203E03	22.00
GPP3378	33-2328Z131K1	BG6203E03SP	24.00	BG6203E03	22.00

NOTE: Shipping weights for parts 3 lbs. or less

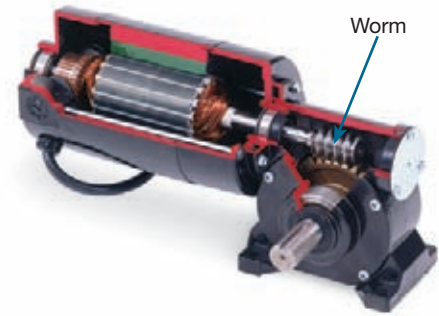
Drive End and Opposite Drive End Bearings for Gearmotors



Catalog Number	Spec Number	Drive End Bearing	List Price	Opposite Drive End Bearing	List Price
GPP3380	33-2328Z160K3	BG6203E03SP	\$24.00	BG6203E03	\$22.00
GPP3384	33-2328Z160K2	BG6203E03SP	24.00	BG6203E03	22.00
GPP3388	33-2328Z160K1	BG6203E03SP	24.00	BG6203E03	22.00
GPP7450	31746A	BG6200C03	17.00	BG6200C03	17.00
GPP7451	31744A	BG6200C03	17.00	BG6200C03	17.00
GPP7452	31742A	BG6200C03	17.00	BG6200C03	17.00
GPP7453	31740A	BG6200C03	17.00	BG6200C03	17.00
GPP7454	31738A	BG6200C03	17.00	BG6200C03	17.00
GPP7455	31736A	BG6200C03	17.00	BG6200C03	17.00
GPP7456	31733A	BG6200C03	17.00	BG6200C03	17.00
GPP7457	31731A	BG6200C03	17.00	BG6200C03	17.00
GPP7458	31728A	BG6200C03	17.00	BG6200C03	17.00
GPP7459	31725A	BG6200C03	17.00	BG6200C03	17.00
GPP7460	31735A	BG6200C03	17.00	BG6200C03	17.00
GPP7461	31732A	BG6200C03	17.00	BG6200C03	17.00
GPP7462	31727A	BG6200C03	17.00	BG6200C03	17.00
GPP7470	31747A	BG6200C03	17.00	BG6200C03	17.00
GPP7471	31745A	BG6200C03	17.00	BG6200C03	17.00
GPP7472	31743A	BG6200C03	17.00	BG6200C03	17.00
GPP7473	31741A	BG6200C03	17.00	BG6200C03	17.00
GPP7474	31739A	BG6200C03	17.00	BG6200C03	17.00
GPP7475	31737A	BG6200C03	17.00	BG6200C03	17.00
GPP7476	31734A	BG6200C03	17.00	BG6200C03	17.00
GPP7477	31730A	BG6200C03	17.00	BG6200C03	17.00
GPP7478	31729A	BG6200C03	17.00	BG6200C03	17.00
GPP7479	31726A	BG6200C03	17.00	BG6200C03	17.00

NOTE: Shipping weights for parts 3 lbs. or less

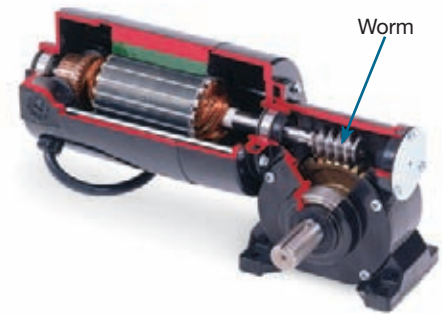
Single Reduction Replacement Gears for Gearmotors



Catalog Number	Spec Number	1st Stage Worm	List Price	1st Stage Gear	List Price
GP12511	32760	WM0054A04	\$70.00	GE0058A07	\$120.00
GP12512	32759	WM0054A02	70.00	GE0058A05	120.00
GP12514	32758	WM0054A01	70.00	GE0058A04	120.00
GP12516	32740	WM0054A07	70.00	GE0058A02	120.00
GP13530	32755	WM0054A04	70.00	GE0058A07	120.00
GP13531	32754	WM0054A03	70.00	GE0058A06	120.00
GP13532	32753	WM0054A02	70.00	GE0058A05	120.00
GP13533	32749	WM0054A01	70.00	GE0058A04	120.00
GP13536	32739	WM0054A07	70.00	GE0058A02	120.00
GP231001	23A010Z005G1	BWM1840	29.00	BGE3299	36.00
GP231002	23A010Z002G2	BWM1837	32.00	BGE3302	26.00
GP231003	23A010Z001G1	BWM1847	32.00		
GP231004	23A217Z002G2	WM0055A09	64.00	GE0081A07	50.00
GP232001	23A006Z002G1	BWM1839	32.00	BGE3308	35.00
GP232002	23A123Z002G1	WM0038A06	54.00	GE0054A06	40.00
GP232003	23A217Z002G1	WM0055A08	64.00	GE0081A01	50.00
GP233001	23A123Z003G1	WM0038A02	54.00	GE0054A02	40.00
GP233002	23A123Z003G2	WM0038A04	54.00	GE0054A04	40.00
GP233003	23A123Z003G3	WM0038A05	54.00	GE0054A05	40.00
GP233004	23A215Z003G1	WM0055A06	64.00	GE0081A04	50.00
GP233005	23A215Z003G2	WM0055A07	64.00	GE0081A05	50.00
GP233006	23A215Z003G3	WM0055A01	64.00	GE0081A06	50.00
GP233007	23A123Z003G4	WM0038A03	54.00	GE0054A03	40.00
GP233021	23A123Z004G1	WM0038A02	54.00	GE0054A02	40.00
GP233022	23A123Z004G2	WM0038A04	54.00	GE0054A04	40.00
GP233023	23A123Z004G3	WM0038A05	54.00	GE0054A05	40.00
GP233024	23A215Z004G1	WM0055A06	64.00	GE0081A04	50.00
GP233025	23A215Z004G2	WM0055A07	64.00	GE0081A05	50.00
GP233026	23A215Z004G3	WM0055A01	64.00	GE0081A06	50.00
GP2501	25A090Z009G1	WM0055A16	64.00	GE0082A05	109.00
GP2503	25A090Z009G2	WM0055A17	64.00	GE0082A06	109.00
GP2506	25A090Z009G4	WM0055A21	64.00	GE0082A07	109.00
GP2507	25A090Z009G3	WM0055A20	64.00	GE0082A01	109.00
GP3301	33-2408Z148G1K2	WM0055A16	64.00	GE0082A05	109.00

NOTE: Shipping weights for parts 3 lbs. or less

Single Reduction Replacement Gears for Gearmotors



Catalog Number	Spec Number	1st Stage Worm	List Price	1st Stage Gear	List Price
GP3303	33-2408Z148G1K3	WM0055A17	\$64.00	GE0082A06	\$109.00
GP3306	33-2408Z148G1K1	WM0055A21	64.00	GE0082A07	109.00
GP3307	33-2408Z148G1K4	WM0055A20	64.00	GE0082A01	109.00
GP7400	558K	WM0055A04	64.00	GE0081A11	50.00
GP7401	24A001Z010G3	WM0055A06	64.00	GE0081A13	50.00
GP7402	24A001Z010G1	WM0055A07	64.00	GE0081A18	50.00
GP7403	24A001Z010G2	WM0055A01	64.00	GE0081A14	50.00
GP7404	24A001Z010G4	WM0055A08	64.00	GE0081A15	50.00
GP7405	694J	WM0055A07	64.00	GE0081A18	50.00
GP7406	525J	WM0055A07	64.00	GE0081A18	50.00
GP7407	695J	WM0055A01	64.00	GE0081A14	50.00
GP7408	696H	WM0055A01	64.00	GE0081A14	50.00
GP7413	31195B	WM0055A03	64.00	GE0081A10	50.00
GP7420	18433H	WM0055A04	64.00	GE0081A11	50.00
GP7421	24A019Z029G2	WM0055A06	64.00	GE0081A13	50.00
GP7422	24A019Z029G3	WM0055A07	64.00	GE0081A18	50.00
GP7423	24A019Z029G4	WM0055A01	64.00	GE0081A14	50.00
GP7424	24A019Z029G5	WM0055A08	64.00	GE0081A15	50.00
GP7425	635J	WM0055A01	64.00	GE0081A14	50.00
GP7426	17423K	WM0055A07	64.00	GE0081A18	50.00
GP7427	19811H	WM0055A01	64.00	GE0081A14	50.00
GP7428	19270H	WM0055A01	64.00	GE0081A14	50.00
GP7433	19198H	WM0055A04	64.00	GE0081A11	50.00
GPF13514	31884B	WM0055A03	64.00	GE0081A10	50.00
GPF13515	31366B	WM0055A05	64.00	GE0081A12	50.00
GPF13516	31367B	WM0055A06	64.00	GE0081A13	50.00
GPF13517	31368B	WM0055A07	64.00	GE0081A18	50.00
GPF13530	31369B	WM0055A05	64.00	GE0081A12	50.00
GPF13532	31371B	WM0055A07	64.00	GE0081A18	50.00

NOTE: Shipping weights for parts 3 lbs. or less

Double Reduction Replacement Gears for Gearmotors



Catalog Number	Spec Number	1st Stage Worm	List Price	1st Stage Gear	List Price	2nd Stage Worm	List Price	2nd Stage Gear	List Price
GP231005	23A012Z001G1			BGE1228	\$30.00	BSG3332	\$19.00		
GP232004	23A005Z001G1	WM0053A02	\$48.00	BGE4345	30.00	WM0078A05	47.00	BGE4609SP	\$35.00
GP232005	23A005Z006G2	WM0053A04	48.00	BGE4343	30.00	WM0078A05	47.00	BGE4609SP	35.00
GP232006	23A005Z005G2	WM0053A03	48.00	BGE4338	30.00	WM0078A07	47.00	BGE4302SP	32.00
GP232007	23A005Z005G1	WM0053A05	48.00	BGE4337	30.00	WM0078A04	47.00	BGE4300	32.00
GP233020	23A005Z007G1	WM0053A02	48.00	BGE4345	30.00	WM0078A05	47.00	BGE4609SP	35.00
GP233027	23A005Z008G1	WM0053A05	48.00	BGE4337	30.00	WM0078A04	47.00	BGE4300	32.00
GP233028	23A005Z008G4	WM0053A03	48.00	BGE4338	30.00	WM0078A07	47.00	BGE4302SP	32.00
GP233029	23A005Z008G3	WM0053A04	48.00	BGE4343	30.00	WM0078A05	47.00	BGE4609SP	35.00
GP7304	27314F	WM0038A07	48.00	BGE4250SP	50.00	BWM5214	41.00	BGE4227SP	35.00
GP7409	697H	WM0038A08	48.00	BGE4245	50.00	BWM5214	41.00	BGE4227SP	35.00
GP7429	18648K	WM0038A08	48.00	BGE4245	50.00	BWM5214	41.00	BGE4227SP	35.00

NOTE: Shipping weights for parts 3 lbs. or less

Multi-Stage Parallel Shaft Replacement Gears for Gearmotors



Catalog Number	Spec Number	1st Stage	List Price	2nd Stage	List Price
GPP12501	24A002Z011G1	SG0047A07	\$85.00	SG0047A08	\$80.00
GPP12502	24A002Z011G2	SG0047A09	85.00	SG0047A10	80.00
GPP12503	24A002Z011G5	SG0047A60	85.00	SG0047A61	80.00
GPP12521	31037E	BGS01116	85.00	BGS01697	85.00
GPP12540	30976B	BGS01154	85.00	BGS00954	85.00
GPP12541	30977B	BGS01225	85.00	BGS00955	85.00
GPP12542	30978B	BGS01226	85.00	BGS00956	85.00
GPP12543	30979B	BGS01227	85.00	BGS00957	85.00
GPP12560	31108E	BGS01154	85.00	BGS00954	85.00
GPP12561	31109E	BGS01225	85.00	BGS00955	85.00
GPP231110	23A011Z006G1	BGS01165	85.00	BGS01696	85.00
GPP2534	25A047Z033G2	BGS01218	85.00	BGS01219	85.00
GPP2538	25A047Z033G3	BGS01214	85.00	BGS01215	85.00
GPP3344	33-2328Z148G1K2	BGS01218	85.00	BGS01219	85.00
GPP3348	33-2328Z148G1K1	BGS01214	85.00	BGS01215	85.00
GPP3374	33-2328Z131K2	BGS01218	85.00	BGS01219	85.00
GPP3378	33-2328Z131K1	BGS01214	85.00	BGS01215	85.00
GPP3384	33-2328Z160K2	BGS01218	85.00	BGS01219	85.00
GPP3388	33-2328Z160K1	BGS01214	85.00	BGS01215	85.00
GPP6454	31738A	BGS00975	85.00	BGS00249	85.00
GPP7450	31746A	BGS00971	85.00	BGS00123	85.00
GPP7451	31744A	BGS00972	85.00	BGS00080	85.00
GPP7452	31742A	BGS00973	85.00	BGS00084	85.00
GPP7453	31740A	BGS00974	85.00	BGS00077	85.00
GPP7470	31747A	BGS00971	85.00	BGS00123	85.00
GPP7471	31745A	BGS00972	85.00	BGS00080	85.00
GPP7472	31743A	BGS00973	85.00	BGS00084	85.00
GPP7473	31741A	BGS00974	85.00	BGS00077	85.00

NOTE: Shipping weights for parts 3 lbs. or less

Multi-Stage Parallel Shaft Replacement Gears for Gearmotors



Catalog Number	Spec Number	1st Stage	List Price	2nd Stage	List Price	3rd Stage	List Price
GPP7456	31733A	BGS00975	\$85.00	BGS00076	\$85.00	BGS00077	\$85.00
GPP7476	31734A	BGS00975	85.00	BGS00076	85.00	BGS00077	85.00
GPP7455	31736A	BGS00976	85.00	BGS00079	85.00	BGS00080	85.00
GPP7474	31739A	BGS00975	85.00	BGS00249	70.00	BGS00080	85.00
GPP7475	31737A	BGS00976	85.00	BGS00079	85.00	BGS00080	85.00
GPP7460	31735A	BGS00977	85.00	BGS00118	85.00	BGS00119	85.00
GPP12544	30980B	BGS01109	85.00	BGS00766	85.00	BGS00956	85.00
GPP12564	31110E	BGS01109	85.00	BGS00766	85.00	BGS00956	85.00
GPP12545	30981B	BGS01109	85.00	BGS00767	85.00	BGS00957	85.00
GPP12547	30982B	BGS01123	85.00	BGS00769	85.00	BGS00957	85.00
GPP12567	31111E	BGS01123	85.00	BGS00769	85.00	BGS00957	85.00
GPP2530	25A047Z033G1	BGS01238	85.00	BGS01239	85.00	BGS01219	85.00
GPP3340	33-2328Z148G1K3	BGS01238	85.00	BGS01239	85.00	BGS01219	85.00
GPP3370	33-2328Z131K3	BGS01238	85.00	BGS01239	85.00	BGS01219	85.00
GPP3380	33-2328Z160K3	BGS01238	85.00	BGS01239	85.00	BGS01219	85.00
GPP233111	23A011Z010G2	BGS01078	85.00	BGS00737	75.00	BGS01591	85.00
GPP233121	23A011Z028G1	BGS01078	85.00	BGS00737	75.00	BGS01591	85.00
GPP12525	31036E	BGS01078	85.00	BGS01158	75.00	BGS01696	85.00
GPP233112	23A011Z010G1	BGS01117	85.00	BGS01157	75.00	BGS01696	85.00
GPP12505	24A002Z011G3	SG0047A63	81.00	SG0047A64	81.00	SG0047A48	81.00
GPP12504	24A002Z011G4	SG0047A11	81.00	SG0047A59	81.00	SG0047A58	81.00

NOTE: Shipping weights for parts 3 lbs. or less

Multi-Stage Parallel Shaft Replacement Gears for Gearmotors



Catalog Number	Spec Number	1st Stage	List Price	2nd Stage	List Price	3rd Stage	List Price	4th Stage	List Price
GPP231108	23A134Z001G2	BGS01160	\$40.00	BGS01163	\$85.00	BGS00742	\$85.00	BGS01591	\$85.00
GPP231109	23A011Z001G2	BGS01159	85.00	BGS01163	85.00	BGS00742	85.00	BGS00749	85.00
GPP232110	23A011Z002G1	BGS01078	85.00	BGS00739	85.00	BGS00742	85.00	BGS01591	85.00
GPP233120	23A011Z007G1	BGS01078	85.00	BGS00739	85.00	BGS00742	85.00	BGS01591	85.00
GPP233140	23A008Z010G1	BGS01109	85.00	BGS00770	85.00	BGS00773	85.00	BGS00956	85.00
GPP233141	23A008Z003G1	BGS01109	85.00	BGS00770	85.00	BGS00774	85.00	BGS00957	85.00
GPP7457	31731A	BGS00976	85.00	BGS00113	85.00	BGS00105	85.00	BGS00080	85.00
GPP7458	31728A	BGS00976	85.00	BGS00113	85.00	BGS00114	85.00	BGS00084	85.00
GPP7459	31725A	BGS00976	85.00	BGS00120	85.00	BGS00121	85.00	BGS00084	85.00
GPP7461	31732A	BGS00975	85.00	BGS00104	85.00	BGS00105	85.00	BGS00080	85.00
GPP7462	31727A	BGS00976	85.00	BGS00207	85.00	BGS00208	85.00	BGS00084	85.00
GPP7477	31730A	BGS00976	85.00	BGS00113	85.00	BGS00105	85.00	BGS00080	85.00
GPP7478	31729A	BGS00976	85.00	BGS00113	85.00	BGS00114	85.00	BGS00084	85.00
GPP7479	31726A	BGS00976	85.00	BGS00120	85.00	BGS00121	85.00	BGS00084	85.00

BALDOR DISTRICT OFFICES



UNITED STATES

ARIZONA

PHOENIX
4211 S 43RD PLACE
PHOENIX, AZ 85040
PHONE: 602-470-0407
FAX: 602-470-0464

ARKANSAS

CLARKSVILLE
1001 COLLEGE AVE.
CLARKSVILLE, AR 72830
PHONE: 479-754-9108
FAX: 479-754-9205

CALIFORNIA

LOS ANGELES
6480 FLOTILLA
COMMERCE, CA 90040
PHONE: 323-724-6771
FAX: 323-721-5859

HAYWARD
21056 FORBES STREET
HAYWARD, CA 94545
PHONE: 510-785-9900
FAX: 510-785-9910

COLORADO

DENVER
2520 W BARBERRY PLACE
DENVER, CO 80204
PHONE: 303-623-0127
FAX: 303-595-3772

CONNECTICUT

WALLINGFORD
65 SOUTH TURNPIKE ROAD
WALLINGFORD, CT 06492
PHONE: 203-269-1354
FAX: 203-269-5485

FLORIDA

**TAMPA/PUERTO RICO/
VIRGIN ISLANDS**
3906 EAST 11TH AVENUE
TAMPA, FL 33605
PHONE: 813-248-5078
FAX: 813-247-2984

GEORGIA

ATLANTA
62 TECHNOLOGY DR.
ALPHARETTA, GA 30005
PHONE: 770-772-7000
FAX: 770-772-7200

ILLINOIS

CHICAGO
1601 FRONTENAC ROAD
NAPERVILLE, IL 60563
PHONE: 630-848-5100
FAX: 630-848-5110

INDIANA

INDIANAPOLIS
5525 W. MINNESOTA STREET
INDIANAPOLIS, IN 46241
PHONE: 317-246-5100
FAX: 317-246-5110

IOWA

DES MOINES
1800 DIXON STREET, SUITE C
DES MOINES, IA 50316
PHONE: 515-263-6929
FAX: 515-263-6515

MARYLAND

BALTIMORE
6660 SANTA BARBARA RD.
SUITE 22-24
ELKCRIDGE, MD 21075
PHONE: 410-579-2135
FAX: 410-579-2677

MASSACHUSETTS

BOSTON
6 PULLMAN STREET
WORCESTER, MA 01606
PHONE: 508-854-0708
FAX: 508-854-0291

MICHIGAN

DETROIT
33782 STERLING PONDS BLVD.
STERLING HEIGHTS, MI 48312
PHONE: 586-978-9800
FAX: 586-978-9969

MINNESOTA

MINNEAPOLIS
21080 134TH AVE. NORTH
ROGERS, MN 55374
PHONE: 763-428-3633
FAX: 763-428-4551

MISSOURI

ST LOUIS
422 INDUSTRIAL DRIVE
MARYLAND HEIGHTS, MO 63043
PHONE: 314-298-1800
FAX: 314-298-7660

KANSAS CITY

1501 BEDFORD AVENUE
NORTH KANSAS CITY, MO 64116
PHONE: 816-587-0272
FAX: 816-587-3735

NEW YORK

AUBURN
ONE ELLIS DRIVE
AUBURN, NY 13021
PHONE: 315-255-3403
FAX: 315-253-9923

NORTH CAROLINA

GREENSBORO
1220 ROTHERWOOD ROAD
GREENSBORO, NC 27406
P O BOX 16500
GREENSBORO, NC 27416
PHONE: 336-272-6104
FAX: 336-273-6628

OHIO

CINCINNATI
2929 CRESCENTVILLE ROAD
WEST CHESTER, OH 45069
PHONE: 513-771-2600
FAX: 513-772-2219

CLEVELAND

8929 FREEWAY DRIVE
MACEDONIA, OH 44056
PHONE: 330-468-4777
FAX: 330-468-4778

OKLAHOMA

TULSA
2 EAST DAWES
BIXBY, OK 74008
PHONE: 918-366-9320
FAX: 918-366-9338

OREGON

PORTLAND
20393 SW AVERY COURT
TUALATIN, OR 97062
PHONE: 503-691-9010
FAX: 503-691-9012

PENNSYLVANIA

PHILADELPHIA
1035 THOMAS BUSCH
MEMORIAL HIGHWAY
PENNSAUKEN, NJ 08110
PHONE: 856-661-1442
FAX: 856-663-6363

PITTSBURGH

616H BEATTY ROAD
MONROEVILLE, PA 15146
PHONE: 412-380-7244
FAX: 412-380-7250

TENNESSEE

MEMPHIS
4000 WINCHESTER ROAD
MEMPHIS, TN 38118
PHONE: 901-365-2020
FAX: 901-365-3914

TEXAS

HOUSTON
4647 PINE TIMBERS
SUITE # 135
HOUSTON, TX 77041
PHONE: 713-895-7062
FAX: 713-690-4540

DALLAS

3040 QUEBEC
DALLAS, TX 75247
PHONE: 214-634-7271
FAX: 214-634-8874

UTAH

SALT LAKE CITY
2230 SOUTH MAIN STREET
SALT LAKE CITY, UT 84115
PHONE: 801-832-0127
FAX: 801-832-8911

WISCONSIN

MILWAUKEE
2725 SOUTH 163RD STREET
NEW BERLIN, WI 53151
PHONE: 262-784-5940
FAX: 262-784-1215

INTERNATIONAL SALES

FORT SMITH, AR
P.O. BOX 2400
FORT SMITH, AR 72902
PHONE: 479-646-4711
FAX: 479-648-5895

CANADA

EDMONTON, ALBERTA
4053-92 STREET
EDMONTON, ALBERTA T6E 6R8
PHONE: 780-434-4900
FAX: 780-438-2600

OAKVILLE, ONTARIO

2750 COVENTRY ROAD
OAKVILLE, ONTARIO L6H 6R1
PHONE: 905-829-3301
FAX: 905-829-3302

MONTREAL, QUEBEC

1844 WILLIAM STREET
MONTREAL, QUEBEC H3J 1R5
PHONE: 514-933-2711
FAX: 514-933-8639

VANCOUVER, BRITISH COLUMBIA

1538 KEBET WAY
PORT COQUITLAM, BC V3C 5M5
PHONE: 604-421-2822
FAX: 604-421-3113

WINNIPEG, MANITOBA

54 PRINCESS STREET
WINNIPEG, MANITOBA R3B 1K2
PHONE: 204-942-5205
FAX: 204-956-4251

AUSTRALIA

UNIT 3, 6 STANTON ROAD
SEVEN HILLS, NSW 2147,
AUSTRALIA
PHONE: (61) (2) 9674 5455
FAX: (61) (2) 9674 2495

UNIT 8, 5 KELLETTS ROAD
ROWVILLE, VICTORIA, 3178
AUSTRALIA
PHONE: (61) (3) 9753 4355
FAX: (61) (3) 9753 4366

AMÉRICA DEL SUR

APTDO. 0818-00440
CIUDAD DE PANAMÁ, PANAMÁ
PHONE: +507 261-5347
FAX: +507 261-5355

CENTRO AMÉRICA Y CARIBE

RESIDENCIAL PINARES DE SUIZA
POL. 15 #44,
NVA. SAN SALVADOR, EL SALVADOR
PHONE: +503 2288-1519
FAX: +503 2288-1518

CHINA

SHANGHAI JIAHUA BUSINESS CENTER
ROOM NO. A-8421
808 HONG QIAO ROAD
SHANGHAI 200030
PHONE: 86-21-64473060
FAX: 86-21-64078620

GERMANY

DIESELSTRASSE 22
D-85551 KIRCHHEIM
MUNICH, GERMANY
PHONE: +49 89 90 5080
FAX: +49 89 90 50 8492

INDIA

14, COMMERCE AVENUE
MAHAGANESH COLONY
RAUD ROAD
PUNE - 411 038
MAHARASHTRA, INDIA
PHONE: 91 20 25 45 95 31
FAX: 91 20 25 45 95 30

ITALY

BALDOR ASR AG
SUCCURSALE DI MENDRISIO
VIA BORROMINI, 20A
CH-6850 MENDRISIO
SWITZERLAND
PHONE: 0041 91 640 99 50
FAX: 0041 91 630 26 33

JAPAN

DIA BLDG 802,
2-21-1 TSURUYA-CHO,
KANAGAWA-KU
YOKOHAMA, 221-0835, JAPAN
PHONE: 81-45-412-4506
FAX: 81-45-412-4507

KOREA

ROOM 208-37
INCHEON INDUSTRIAL GOODS
CIRCULATING CENTER
SONGHYEON 3-DONG, DONG-GU
INCHEON, KOREA, 401-705
PHONE: 82 32 588 3253
FAX: 82 32 588 3254

MÉXICO

KM. 2.0 BLVD. AEROPUERTO
LEÓN 37545, GUANAJUATO,
MÉXICO
PHONE: 52 477 761 2030
FAX: 52 477 761 2010

MIDDLE EAST & NORTH AFRICA

VSE INTERNATIONAL CORP.
3233 NORTH ARLINGTON HEIGHTS
SUITE 100W
ARLINGTON HEIGHTS, IL 60004
PHONE: 847 590 5547

SINGAPORE

51 KAKI BUKIT ROAD 2
K B WAREHOUSE COMPLEX
SINGAPORE 417863
PHONE: (65) 6 744 2572
FAX: (65) 6 747 1708

SWITZERLAND

POSTFACH 73
SCHUTZENSTRASSE 59
CH-8245 FEUERTHALEN
SWITZERLAND
PHONE: +41 52 647 4700
FAX: +41 52 659 2394

TAIWAN

4F, NO. 25, SEC. 1,
TUNHUA S ROAD,
TAIPEI 10557, TAIWAN, R.O.C.
PHONE: (886-2) 2577-4352
FAX: (886-2) 2577-4157

UNITED KINGDOM

6 BRISTOL DISTRIBUTION PARK
HAWKLEY DRIVE
BRISTOL BS32 0BF U.K.
PHONE: +44 1454 85 0000
FAX: +44 1454 85 9001

BALDOR

P.O. Box 2400 • Fort Smith, AR 72902-2400 U.S.A.

Ph: (479) 646-4711 • Fax (479) 648-5792

International Fax (479) 648-5895

www.baldor.com